



Beyond Collaboration: Collective Impact to Achieve Social Change

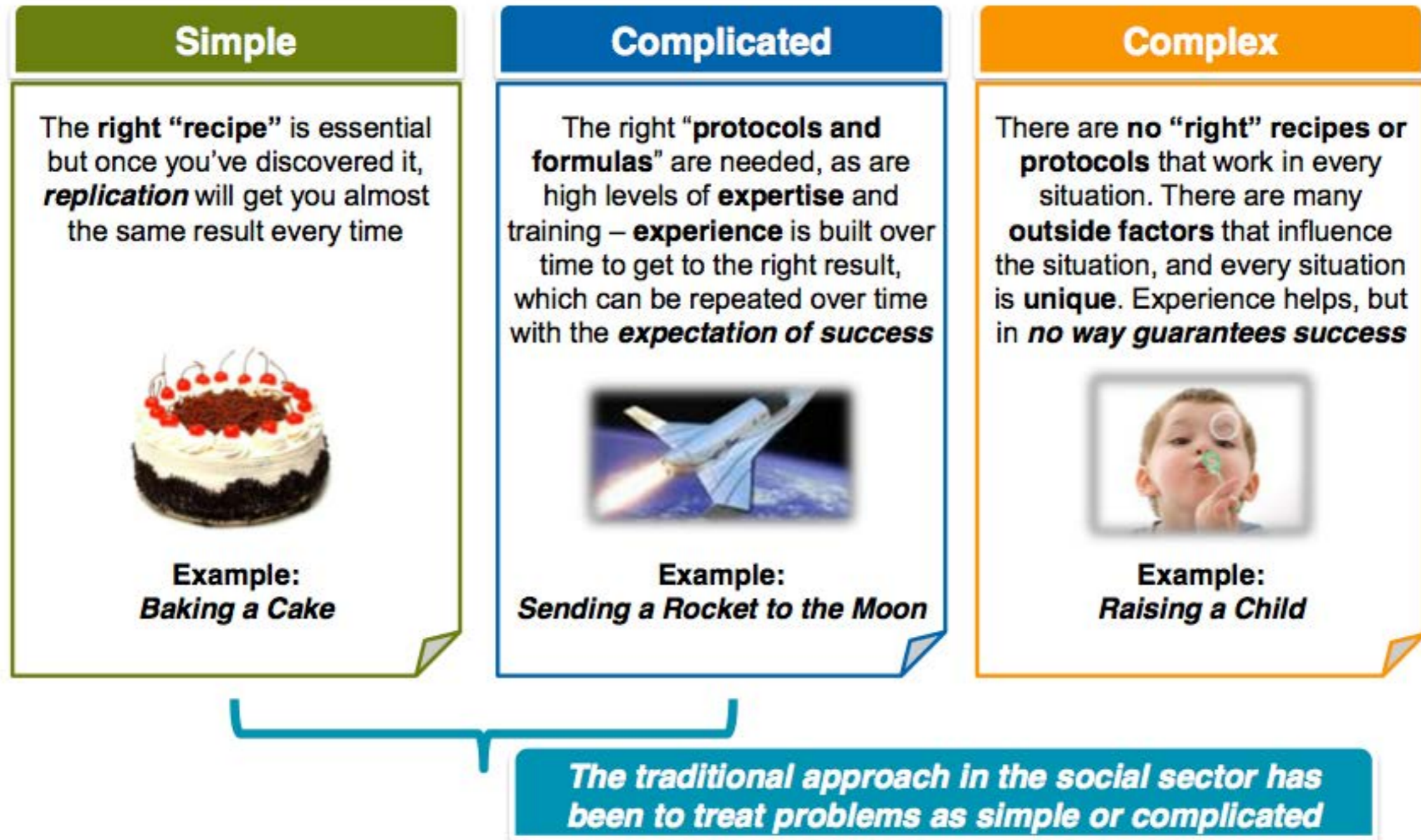
Philadelphia Higher Education Network for Neighborhood Development | October 27, 2015

Presentation & Design by Jason D. Alexander, Principal & Co-Founder, Capacity for Change, LLC



Despite the awesomeness of nonprofits, schools and philanthropy, why do so many young people in our community still lack educational, economic, health and leadership opportunities?

Types of Community Problems



Source: Collective Impact & Community Foundations Presentation, FSG Social Impact Consultants. Adapted from Getting to Maybe, by Westley, Zimmerman & Patton.

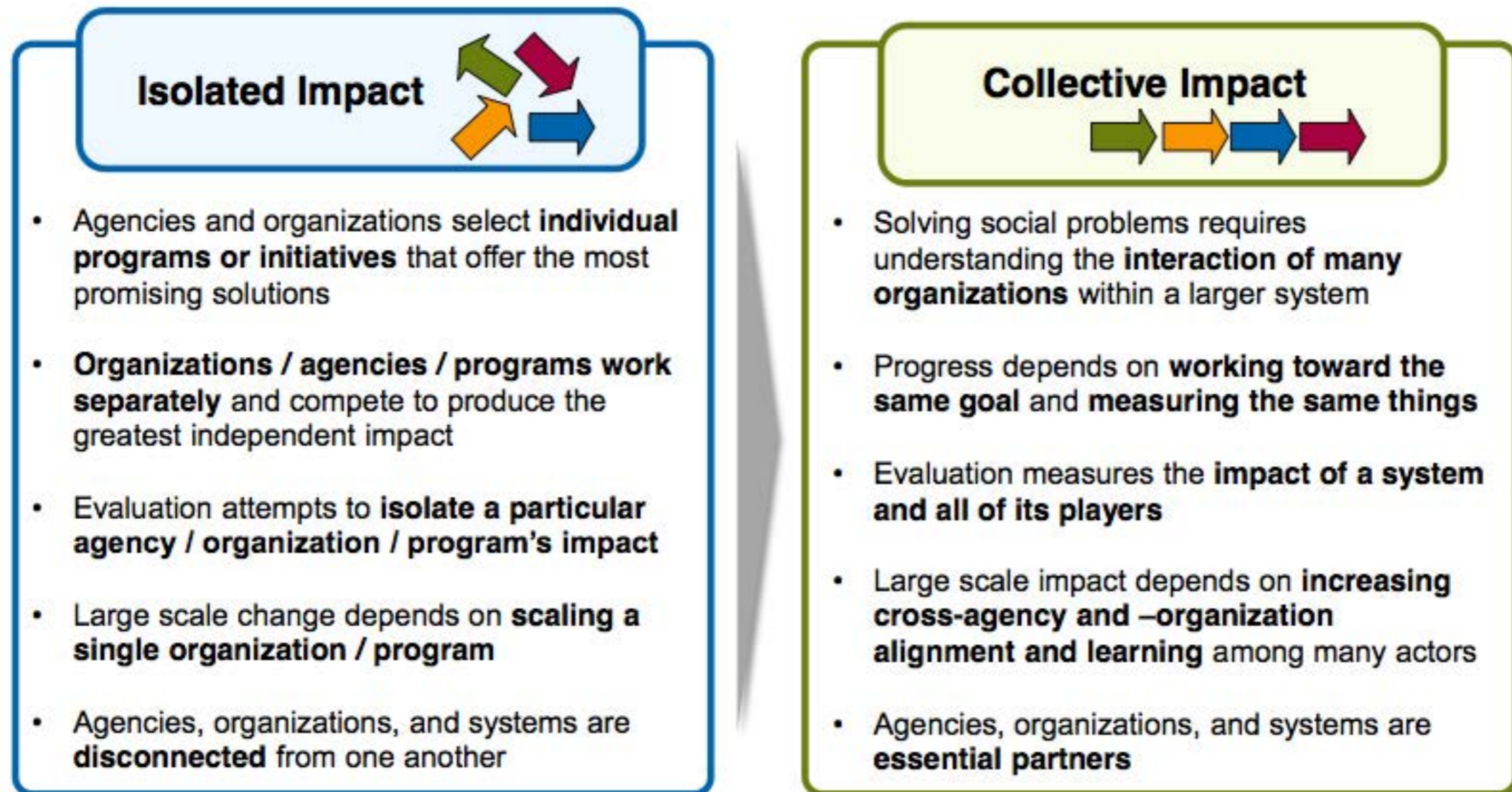
Solving Complex Problems

Large-scale social change requires broad cross-sector coordination, not the isolated intervention of individual organizations.



Isolated vs. Collective Impact

There is a Fundamental Mismatch Between the Complexity Of Social Problems and the Traditional Focus on Disconnected Solutions



Source: Collective Impact & Community Foundations Presentation, December 15, 2011, FSG Social Impact Consultants

What Is Collective Impact?



Collective impact brings people together, in a structured way, to achieve social change.

Five Pillars of Collective Impact

Common Agenda	Establishing a shared vision for change that defines both the problem and a strategic framework for solving it.
Shared Measurement	Evaluating and reporting progress in a consistent way using an agreed upon set of community outcomes.
Mutually Reinforcing Activities	Coordinating individual strategies and programs through a collective plan of action to maximize results.
Continuous Communications	Building trust, relationships and shared knowledge among all partner organizations.
Strong Backbone	Empowering a dedicated team to guide vision & strategy, coordinate the work of every partner, build public will, advance policy and mobilize funding.

Case Study: StrivePartnership



Common Agenda	Supporting the success of every child from cradle to career.
Shared Measurement	<ul style="list-style-type: none"> Kindergarden readiness +9% High school graduation +11% Postsecondary enrollment +10% (Over five year period)
Mutually Reinforcing Activities	<ul style="list-style-type: none"> School districts Early childhood educators Nonprofits and foundations Colleges and universities Civic and business leaders
Continuous Communications	<ul style="list-style-type: none"> Educational networks Learning communities Website, videos, convenings, annual report cards, PR and social media
Strong Backbone	StrivePartnership, a subsidiary of KnowledgeWorks (a 501c3)

Case Study: StriveTogether

StriveTogether
Every child. Cradle to career.



CRADLE TO CAREER NETWORK

The StriveTogether Cradle to Career Network is a national network of community partnerships working to improve education success for every child by bringing together cross-sector partners around a common vision.

StriveTogether supports these communities with effective resources and a nationally-recognized collective impact approach focused on aligning existing resources and using data to determine what works best for kids. StriveTogether helps communities develop shared outcomes and success metrics, identifying best practices and solutions to address local disparities and improve outcomes for all children.

www.strivetgether.org

A national movement to improve education for every child, from cradle to career

64

COMMUNITY PARTNERSHIPS

building local infrastructure to improve education outcomes for every child



32 STATES
+ DISTRICT OF COLUMBIA



9,600+
ORGANIZATIONS
ENGAGED



Early Childhood



K-12



Higher Education



Community-based Organizations



Business



Civic



Investors

Is Collective Impact Right For You?

Collective Impact Is a Unique and Differentiated Approach to Bringing Actors Across Sectors Together to Work Toward a Common Agenda



Source: Collective Impact & Community Foundations Presentation, December 15, 2011, FSG Social Impact Consultants

Collective Impact: Keys to Success

Equity

DEI | Lens | Mirror

Equity: The Soul of Collective Impact

PolicyLink

Michael McAfee, Angela Glover Blackwell, and Judith Bell



PolicyLink is a national research and action institute advancing economic and social equity by **Lifting Up What Works**®.

The long, rich history of community-building work in low-income communities and communities of color provides a foundation of theory and practice on which today's collective impact framework¹ must build to achieve results commensurate with society's biggest challenges. That foundation is equity—just and fair inclusion into a society in which all can participate, prosper, and reach their full potential. Equity, both racial and economic, must be infused through all aspects of collective impact processes,² from the deep engagement of communities to the collection and analysis of data; the design and scale of solutions; and the capacities, point of view, and roles of backbone organizations.

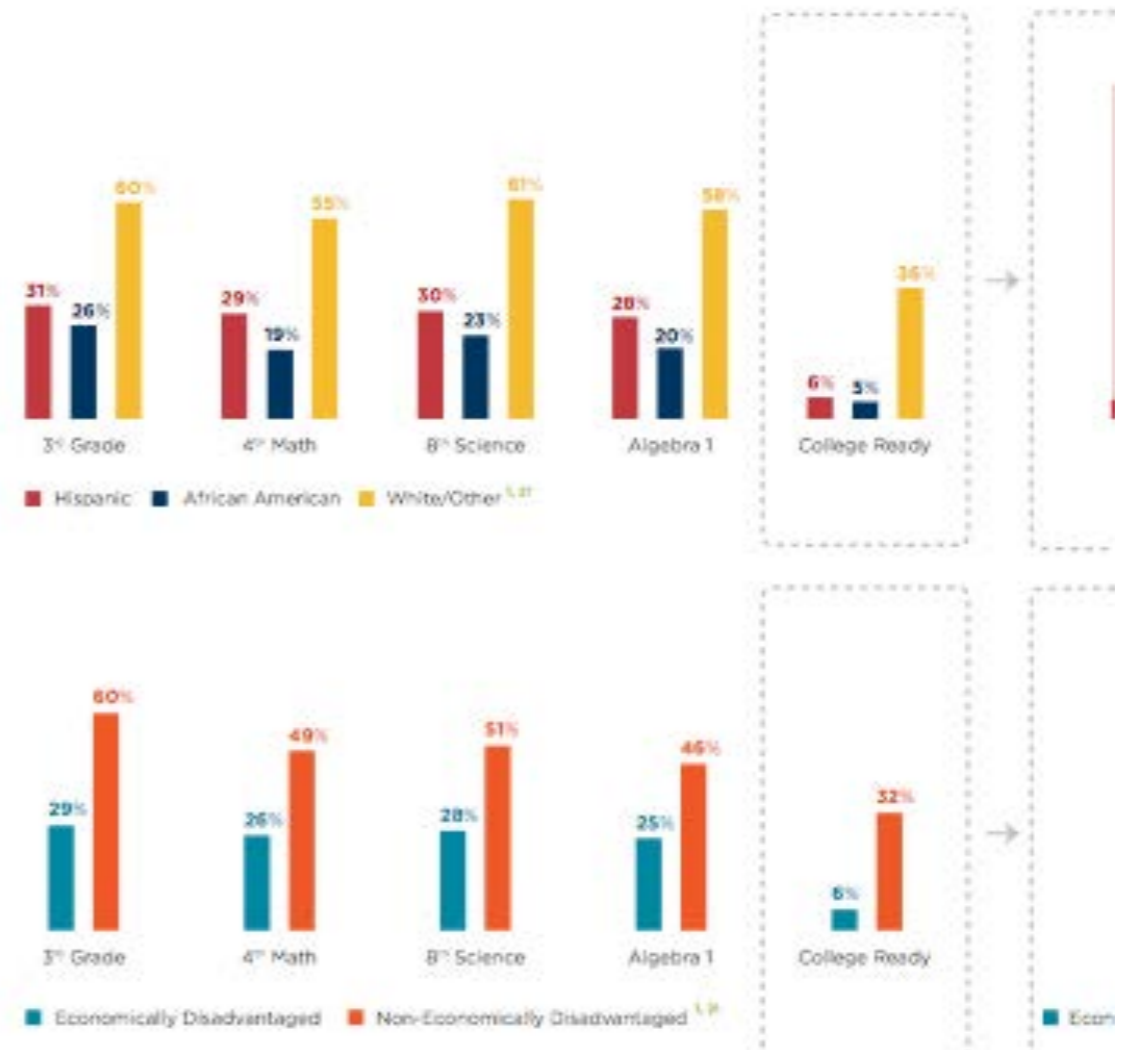
Collective Impact: Keys to Success

Data

Aggregated | Disaggregated |
Learning for Improvement

ARE WE SERVING ALL OF OUR CHILDREN EQUITABLY?

The short answer is no. As children of color make up 80% of our student population their potential is concerning. Equally troubling is the rate at which our children fourths of our student population, are left behind. As a community, we must fix the majority of our student body will soon become the majority of our commu



**Collective Impact:
Keys to Success**

Community Engagement

Voice | Grassroots/Grasstops



Beyond Collaboration: Collective Impact to Achieve Social Change

Jason D. Alexander
Principal & Co-Founder
Capacity for Change, LLC
www.capacityforchange.com
jason@capacityforchange.com



We Rise! Children, Trauma, and Resilience, 701 North Broad Street, Philadelphia, PA
Artist: Josh Sarantitis

Beyond Collaboration: Collective Impact to Achieve Social Change

Five Pillars of Collective Impact	Questions For Consideration	Collective Impact Keys to Success
1. Common Agenda	1. What complex social problem are we trying to solve?	1. Equity: A DEI framework, an equity lens and an equity mirror
2. Shared Measurement	2. Does the solution require long-term investment & cross-sector engagement?	2. Data: Aggregated, disaggregated and continual learning for improvement
3. Mutually Reinforcing Activities	3. Are we committed to using data to set our agenda & make decisions?	3. Community Engagement: Listening to community voices, grassroots/grasstops
4. Continuous Communications	4. Are we committed to the principles of diversity, equity & inclusion?	Case Study: StriveTogether www.strivetogether.org
5. Strong Backbone	5. Are we willing to engage community members as system leaders & partners?	For more information: Collective Impact Forum collectiveimpactforum.org