
PHENND

Philadelphia Higher Education Network for Neighborhood Development

2009 Annual Conference

Mobilizing Our Assets: Intellectual, Financial and Institutional

Friday, February 27, 2009

Chestnut Hill College



PHENND Staff

Hillary Kane

Director

Robyn Baylor

AmeriCorps*VISTA

PHENND Co-Chairs

Dr. Ira Harkavy

Director

Netter Center for Community Partnerships

University of Pennsylvania

Debra Kardon-Brown

Lang Center for Civic and Social Responsibility

Swarthmore College

Dr. David Bartelt

Professor

Geography and Urban Studies

Temple University

Dr. Marcine Pickron-Davis

Assistant to the President for Community

Engagement and Diversity Initiatives

Widener University

Dr. Karen Tidmarsh

Dean of the College

Bryn Mawr College

Dr. Frank Bernt

Director, Faith-Justice Institute

Saint Joseph's University

Dr. Suzanne Rocheleau

Associate Dean, Pennoni Honors College

Drexel University



Our Mission

The Philadelphia Higher Education Network for Neighborhood Development (PHENND) is a consortium of 32 colleges and universities in the greater Philadelphia area. PHENND works to build the capacity of its member institutions to develop mutually beneficial, sustained, and democratic community-based service-learning partnerships. The consortium actively seeks to revitalize local communities and schools and foster civic responsibility among the region's colleges and universities.

Higher educational institutions can function as permanent anchors and partners for community improvement. Moreover it is deeply in their interests to do so; their futures are intertwined with that of their neighborhoods. PHENND provides a vehicle for coordinating and, where appropriate, combining the efforts of higher eds so that they can make a significant contribution to improving the entire Philadelphia region.

About the conference theme

Welcome to the 2009 Annual PHENND Conference: Mobilizing Our Assets: Intellectual, Financial and Institutional. Colleges and universities have a profound impact on their local communities - whether through the location of a new building or the support a service-learning program. Given today's economic challenges (as well as the lingering problems of systemic poverty), how can colleges and universities help families and communities achieve greater economic self-sufficiency?

The 2009 Annual PHENND Conference will ask these questions and explore areas of common interest between the service-learning and financial asset development communities. How can higher eds bring their intellectual and human resources to the table to help communities grow their financial resources? What are the best practices in these areas and how are colleges already involved? Join us to explore these questions.

Friday, February 27



Main Program

St. Joseph's Hall

- 8:30 Registration & Continental Breakfast (Rotunda)
- 9:00 Welcome and Opening (Redmond Room)
Carol Jean Vale, SSJ, Ph.D., President, Chestnut Hill College
Hillary Kane, Director, PHENND
- 9:20 Opening Panel: Financial Stability in the Delaware Valley
- 10:30 Workshop Series I
- 12:00 Lunch (Redmond Room)
- 1:00 Keynote Speaker (East Parlor)
President Karen Gross, Southern Vermont College
- 1:45 Workshop Series II
- 3:00 Break
- 3:15 Workshop Series III
- 4:30 Closing Plenary: The Money Show





President Karen Gross

President Karen Gross has had a long and distinguished career as an academic and community development leader. For more than two decades, she was a Professor of Law at New York Law School where she specialized in consumer finance and over-indebtedness. In addition, she was, until recently, the President and CEO of an educational non-profit organization that designs, implements and studies programs to improve the financial literacy skills of consumers called The Coalition for Consumer Bankruptcy Debtor Education. A cum laude graduate of Smith College, where she was also elected to Phi Beta Kappa, Dr. Gross graduated cum laude from Temple University School of Law, having spent her final year of law school at the University of Chicago.

Prior to entering legal academia, President Gross taught at the high school and college levels and practiced law in Chicago and New York. Dr. Gross has earned a national and international reputation as a scholar, teacher, administrator and advocate dedicated to increasing understanding of the human impact of over indebtedness and improving the lives of those less privileged. Her legal scholarly work has been published in leading journals, including the University of Pennsylvania Law Review, Michigan Law Review, and Notre Dame Law Review. Her most recent work on financial literacy education has appeared in Behavioral Sciences and the Law, the Journal of Student Affairs and Financial Counseling and Planning Journal. Her prize-winning book, FAILURE AND FORGIVENESS, was published by Yale University Press.

Dr. Gross has conducted empirical and historical research on women and money, worked with individual debtors as a volunteer lawyer at New York Legal Aid Society, and participated in several court appointed gender fairness committees, focusing on the role of women in the professions. She has testified before local and federal governmental bodies including, most recently, the New York City Department of Consumer Affairs and the Federal Financial Literacy and Education Commission. President Gross is the recipient of numerous awards and grants including, most recently, the 1999 Legal Aid Society Pro Bono Award, the 2002 New York State Bar Association's President's Pro Bono Service Award, the 2004 American Association of University Women (AAUW) Education Foundation Senior Scholars Special Commendation of Honor and the Westchester Community College 2006 Women's History Month Honoree.



Financial Stability in the Delaware Valley

Presenters:

Jean Hunt, Campaign for Working Families

“What’s Happened to the American Family?” What was the state of the American middle class in the years between World War II and 1970? What kinds of economic changes have we seen since 1970 in terms of income distribution, savings, debt? What is the impact of the current recession on average American households? What does it cost to live in Philadelphia and how do these costs compare to income? Drawing on her seven years of directing the Campaign for Working Families, Jean will answer these questions and more as she discusses policy solutions that could make a difference in terms of taxes, tax incentives to save, minimum wage, and retirement.

Dr. David Bartelt, Metropolitan Philadelphia Indicators Project

The growth of easily accessed community information makes it possible for service learning students and coordinators to obtain a wealth of information about the communities they serve, or to identify issues within the communities adjacent to their campuses. David will demonstrate the possibility of using MetroPhilaMapper, created by Temple University's Metropolitan Philadelphia Indicators Project (MPIP) to serve in this capacity. He will be showing a series of maps that indicate some basic income, demographic and housing information to demonstrate the ease of use of the project, and will be introducing the possibility of using MetroPhilaMapper in both planning and service research aspects of university-community outreach efforts.

Sharon Ward, Pennsylvania Budget and Policy Center

The Pennsylvania Budget and Policy Center (PBPC), is a nonpartisan, statewide policy research project that provides independent, credible analysis on state tax, budget, and related policy matters, with attention to the impact of current or proposed policies on working families. Drawing on her work with PBPC, Sharon will discuss statewide impacts of the current economic crisis, the implications of policy discussions currently taking place in Harrisburg, and ways that active citizens can shape those policies to ensure a brighter future for working families.



Workshop Series I: 10:30-11:45 AM**The Volunteer Income Tax Assistance Program (Room: MH 314)**

Presented by: Ruth Strickland (Bryn Mawr College), Lea Zacharka (Internal Revenue Service), Dr. Chris Cocozza (DeSales University), Phyllis Mason (CADCOM), and Stephanie Whang (Swarthmore College)

The VITA (Volunteer Income Tax Assistance) Program offers free tax help to low- to moderate-income (generally, \$42,000 and below) people who cannot prepare their own tax returns. Certified volunteers receive training to help prepare basic tax returns. This panel will focus on the VITA programs in Delaware and Montgomery Counties and how each of those unique programs has tapped into the higher education institutions in their area. Panelists will speak about the reciprocal relationships that have been built between community organizations, area colleges and universities and the communities that each VITA site serves from the student, community, and academic perspectives.

Benefit Bank and NSP Partnership (Room: MH 226)

Presented by: Joshua Romalis, Ashely Gunn, and Josh Jackson (National Student Partnerships), Rob Bell (Solutions for Progress), Sarah Matsui (University of Pennsylvania), and Sandra O'Connor (Temple University)

From a social services perspective, National Student Partnerships (NSP) has been called "Philadelphia's Best-Kept Secret," but all that might change thanks to a powerful and productive partnership between NSP and The Benefit Bank, the core software from Solutions for Progress. NSP operates drop-in resource centers in both North and West Philadelphia, staffed by student volunteers from area colleges and universities who working one-on-one with low-income community members. By harnessing the power of The Benefit Bank to assist clients in applying for public benefits as well as tax preparation, NSP's student volunteers have been able to significantly increase their capacity to serve more clients and provide more services. In return, The Benefit Bank has been able to increase its volunteer base and deepen its commitment to reaching underserved community members. Come learn about the engaging details of this partnership, as well as the rewards and challenges faced by some of the students actually doing the work.

Foreclosure Prevention: Saving Homes, Saving Neighborhoods Campaign (MH 324)

Presented by: Don Kelly and Rachel Moore, Greater Philadelphia Urban Affairs Coalition



Learn about the foreclosure problem in the Philadelphia Region and up-to-date solutions. Using GPUAC's *Foreclosure Prevention Resource Guide*, the workshop will begin with a summary of the foreclosure process. There will be a discussion of new and existing programs available to help homeowners keep their homes. The new *Saving Homes, Saving Neighborhoods* Campaign will be the main topic discussed. We will focus on this campaign because a door-to-door grassroots approach is being used and has the potential to involve students. A list of community organizations that could use volunteers (located in the counties of PHENND institutional partners) will be available to all attendees. The workshop will close with a brainstorming session to come up with ideas on how to connect students and universities to local communities to prevent foreclosure from becoming a larger problem.

There's Nothing Useful in This Town: Using mapping strategies to uncover hidden resources (MH 225)

Presented by: Dr. Marina Barnett and Dr. Chad Freed, Widener University

This presentation seeks to demonstrate the use of GIS software to represent neighborhood resources that can be utilized by social workers, educators and community residents. In addition to an introduction to asset and GIS mapping, participants will engage in exercises in identifying personal and institutional resources in their communities and developing community-university partnerships to conduct meaningful and useful assessments.

Workshop Series II – 1:45-3:00 PM

Financial Services at the VITA Site (MH 224)

Presented by: Kamysha Martin (Nehemiah Gateway CDC)

Come learn how to help people make the most of their money at VITA (Volunteer Income Tax Assistance) Sites. From savings accounts to certificates of deposits, split refunds to credit reports, we are helping educate people about their money and how to make it work for them. What better time to provide this information than at the VITA Sites!

The Philadelphia Food Stamp Enrollment Campaign: Lessons from the Trenches (MH 226)

Presented by: Mary Summers and Elise Miller (University of Pennsylvania), Julie Eubanks (Greater Philadelphia Coalition Against Hunger), and Hillary Kane (PHENND)



The Greater Philadelphia Coalition Against Hunger's Food Stamp Enrollment Campaign was first piloted in a service-learning class at the University of Pennsylvania in the fall of 2002. Expanded initially through an 18-month grant from the USDA that included a partnership with PHENND, this Campaign has grown to involve work with students and faculty on 14 area campuses. Over the last 7 years it has screened more than 30,000 Philadelphians for their eligibility for Food Stamps (now called SNAP), finding about 70% eligible for the program. The Campaign's database demonstrates that about 50% of potentially eligible clients have successfully applied for the program, bringing millions of dollars in federal revenues into low-income households and neighborhoods throughout the city. In addition, a staff-led program of research and advocacy involves students and faculty in documenting the multiple barriers faced by clients who seek to apply for this program; and an advocacy agenda includes works with federal, state, and county agencies to address these barriers. This workshop will report on lessons learned from this Campaign from the point of view of faculty, students, and Hunger Coalition staff, especially with regard to the infrastructure needed to establish a successful campaign and university-community partnerships.

Self-Sufficiency Standard: A New Way to View Income Adequacy (MH 309)

Presented by: Lynda Kugel, PathwaysPA

This workshop will address different measures of poverty and demonstrate how the Pennsylvania Self Sufficiency Standard provides an effective tool for determining income adequacy. The use of this Standard as a vehicle for understanding both policy and practical applications will be illustrated.

Financial Advancement Network (FAN) Clubs (MH 324)

Presented by: Shanté Antrom-Gowans (Greater Philadelphia Urban Affairs Coalition)

A Financial Advancement Network Club - or FAN Club - is a monthly meeting of individuals who are committed to changing their money management habits into ones that allow them to be in control of their financial situations and even their financial destinies. This session will include an overall description of the current and expanded FAN Club model; a sample peer discussion and the opportunity to join the financial educator's network. Emphasis will be placed on how college and university students can be both beneficiaries and service-providers of the FAN Club model.



Workshop Series III – 3:15-4:30 PM

The University of Pennsylvania's Economic Inclusion Program (MH 226)

Presented by Glenn Bryan and Joann Weeks (University of Pennsylvania)

At the inauguration of President Amy Gutmann, the University of Pennsylvania launched the *Penn Compact* of which one tenant is engaging locally by providing opportunities for local individuals and businesses to participate in the economic activity of Philadelphia's largest private employer. At the heart of this strategy is Penn's Economic Inclusion Program. This presentation will describe the many facets of Penn's Economic Inclusion Program, including the Lucien Blackwell Apprenticeship Program, highlighting lessons learned for other area colleges that may wish to embark on similar initiatives. The presentation will also cover the relationship between this Presidential initiative, and the existing Netter Center for Community Partnerships, which is responsible for Penn's academically-based community partnerships. The role of colleges and universities as "anchor institutions" will be discussed.

PolicyMap as a Tool for Community-Based Research (MH 309)

Presented by Emily Kahoe (The Reinvestment Fund)

PolicyMap is an innovative online data mapping service that gives public policy decision makers access to relevant, up-to-date information. TRF is a national leader in the financing of neighborhood revitalization. PolicyMap grew out of TRF's public policy consultancy, and is a manifestation of our belief that good data leads to smart decisions. PolicyMap launched in May 2008 and currently has 10,000 registered users and subscribers. This presentation will provide a basic overview of PolicyMap's features and will also provide participants with ideas for community-based research projects tied to economic development in the Greater Philadelphia region.

Project Great Potential: Developing the Minds and Entrepreneurial Potential of Young Men of Color (MH 324)

Presented by Russell Hicks (The Enterprise Center) and JacQuita Lessane' (Penn State Brandywine)

Since August 2006, Project Great Potential (PGP) has been preparing young males of color, ages 18-25, from Philadelphia's under-resourced communities for business ownership, employment, and/or higher education to compete in today's challenging market. Come learn about the impacts this program is having on the lives of young men in Philadelphia. The role of college student interns in building the capacity of the program will be highlighted.



Shante Antrom-Gowans is the Program Manager, Community & Economic Development Department at the Greater Philadelphia Urban Affairs Coalition (GPUAC). GPUAC drives change in communities through Programs, Policy and Research. Shante has served in the Community & Economic Development Department since 2004. She is responsible for the growth and productivity of the Financial Advancement Network (FAN) Clubs, Money Smart workshops, Employer Assisted Housing, Business Builder Loan Program outreach and the PHIL-Plus and Mini-PHIL Home Improvement Loan Programs. Shante holds a B.B.A. from Temple University's Fox School of Business and Management with a concentration in Entrepreneurship. In addition, Ms. Gowans has a certificate of training for the FDIC's Money Smart program and Citi Bank's financial education curriculum. She is currently studying for her certification in Financial Counseling.

Marina Barnett, DSW is currently an Associate Professor in Widener University's Center for Social Work Education. Dr. Barnett received her Bachelors of Arts Degree from Clarion University, a Masters in Social Work from the University of Michigan and a Doctorate in Social Work from the University of Pennsylvania. Dr. Barnett teaches Social Welfare Policy, Organizational Practice and Grant Writing and Community Organization at the BSW, MSW and Ph.D. levels. In addition to her teaching experience, Dr. Barnett has fifteen years of organizational and community development expertise. Dr. Barnett has served in the Philadelphia and Chester communities as a consultant to numerous community-based organizations and government offices.

Dr. David W. Bartelt is Professor of Geography & Urban Studies at Temple University, where he has been a member of the faculty since 1980. He specializes in housing and community development research, and has particularly focused on barriers to affordable housing and home ownership, both in contemporary settings and in the context of the Great Depression. He is a co-author of *Restructuring the Philadelphia Region*, and is a co-principal on the Metropolitan Philadelphia Indicators Project (MPIP), of which MetroPhilaMapper is an important new feature. He also represents Philadelphia in the National Neighborhoods Indicator Partnership, serves on the advisory committee of Inside-Out, and serves as a member of the PHENND Advisory Board. In the past several years at Temple, he has helped the original Service Learning Roundtable evolve into the Community Based Learning Committee, a standing committee of the Temple Faculty Senate.

Rob Bell works in the Marketing Department of Solutions for Progress, owner-operator of The Benefit Bank. He is responsible for developing networks of user groups throughout the state of Pennsylvania. Rob went to public and private schools in the area and graduated



from Temple University with a degree in business administration. Later, after working in the private sector in sales and marketing, he earned a master's degree in public administration, also from Temple. His work in the non-profit arena included long stints with the YMCAs of Philadelphia, the Mayor's Office of Community Services (under the Rendell regime) and the Philadelphia Housing Authority. Rob has also spent much of the past two decades involved in social justice causes. He is the author of the book, The Myth of Rock and Roll: the Racial Politics of American Popular Music; 1945-2005.

Glenn Bryan is Assistant Vice President and Director of Community Relations at the University of Pennsylvania and the University of Pennsylvania Health System (UPHS) and a life-long resident of West Philadelphia. In this capacity, Mr. Bryan represents the President on behalf of the University and UPHS in its relationship with the local and citywide communities. He also serves as a liaison between the University/UPHS and numerous community and civic organizations and provides support and consultation to the President, the Vice President for Government and Community Affairs and other key administrative staff of the University/UPHS. In recent years, he has worked closely with city officials to facilitate successful municipal legislation for the University. He led University efforts to increase community economic participation and provided leadership and coordination for a host of community initiatives ranging from education to housing. As Director of the Office of Community Relations, Mr. Bryan collaborates with all segments of the University and its health system regarding community outreach and development activities. He facilitates collaboration with the West Philadelphia Partnership, the University City District and other local organizations to provide avenues to maximize the use of resources to benefit the community.

Chris Coccozza is an Associate Professor/Chair of the Business Department at DeSales University in Center Valley, PA where he teaches both graduate and undergraduate courses in accounting, law and taxation. He has run the VITA program at DeSales for the past 9 years. The program has assisted over 800 taxpayers during this time period. He has presented numerous papers in the area of taxation. He has also been awarded numerous grants based upon the innovative use of technology in the classroom. He is an attorney with a JD from Fordham University School of Law and an LLM in taxation from New York University School of Law and is licensed to practice law in both New Jersey and New York. He has a BS in Accounting from Fordham University College of Business Administration and is a licensed CPA in Maryland. Prior to teaching at DeSales University, he taught at both Fordham University and Elizabethtown College. He has several years of industry experience in the area of taxation at Deloitte and Touché and the Lexis Publishing Group.



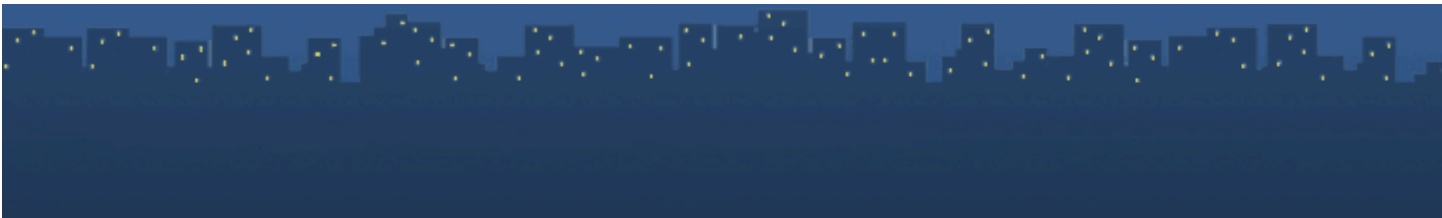
Julie Eubanks is the Outreach Coordinator for the Greater Philadelphia Coalition Against Hunger, whose responsibilities include recruiting, training, and supervising Vistas, service-learning students, and volunteers in the Food Stamp Enrollment Campaign. She first volunteered with the Campaign as a freshman at Haverford College and followed up on this involvement with a summer internship with the Coalition. She was hired by the Coalition in her present position upon her graduation from college.

Chad Freed is an Assistant Professor of Environmental Science at Widener University. He is a Ph.D. candidate at the University of Pennsylvania.

Ashley Gunn is currently serving as an AmeriCorps member with National Student Partnerships – North Philadelphia. She is a recent graduate of the University of Florida where she majored in English with a minor in Organizational Leadership for Nonprofits. While in college, she was actively involved in her schools Center for Leadership and Service and other community service efforts and still maintains an interest in engaging college students in community service work.

Russell Hicks is the Program Manager for the Project Great Potential program at The Enterprise Center in West Philadelphia. Project Great Potential is an entrepreneurship program that helps young adult males of color, ages 18-25, from under-resourced communities build a foundation for entrepreneurship through personal and career development, access to professional resources, and gaining skill-sets necessary to succeed in the business world and the journey of life. The Enterprise Center is a non-profit business development center that provides access to capital, building capacity, business education and economic development opportunities to high-potential minority entrepreneurs. Mr. Hicks graduated from Howard University in 2000 with a Bachelor of Arts in Business Administration.

Jean Hunt is the Director of the Division for Working Families at the Greater Philadelphia Urban Affairs Coalition, and has led the Campaign for Working Families for the past seven years. The Campaign is an initiative designed to increase resources available to low-wage working families in the Philadelphia region. The Campaign has completed 68,000 tax returns for its customers, bringing them \$106 million in state and federal credits and refunds, and saving them approximately \$17 million in fees and charges. Jean's previous professional experience includes: Program Director for Children, Youth and Families at the William Penn Foundation; Executive Director of the Mayor's Children and Families Cabinet, City of Philadelphia, and Assistant Managing Director in the Philadelphia Department of Recreation. As an R.N., she served as the Executive Director of the Elizabeth Blackwell Health Center for



Women; Director of Outpatient Services at the Booth Maternity Center and worked as an R.N. in a variety of clinical settings including the emergency room, outpatient clinics and home nursing. She has worked as a community organizer and is active in a variety of community organizations.

Hillary Kane is the Director for the Philadelphia Higher Education Network for Neighborhood Development (PHENND). PHENND is a consortium of 32 institutions of higher education in the Greater Philadelphia region that seeks to help campuses connect to their communities through mutually beneficial service and service-learning partnerships. Since Ms. Kane joined PHENND in 1999, the organization has increased its membership, developed new multi-university programs and partnerships, and become a leader in the field of service-learning. Ms. Kane is a graduate of the University of Pennsylvania where she received a Bachelor of Arts in Urban Studies. Ms. Kane serves as President of the Executive Board of the Penn State Cooperative Extension for Philadelphia County. She is also on the Local Advisory Board of National Student Partnerships.

Don Kelly is the Director of Community and Economic Development Department of the Greater Philadelphia Urban Affairs Coalition (GPUAC). Mr. Kelly has a background in banking and is developing a menu of good financial products for the Saving Homes, Saving Neighborhoods campaign.

JacQuita Lessane' is a senior semester undergraduate student at The Pennsylvania State University majoring in Human Development and Family Studies with a minor in Community Service and Civic Engagement. She received her Associates degree with honors in Elementary Education from Delaware County Community College. She also received a Small Business Management Certification from Temple University, Fox School of Business. JacQuita's education interest at Penn State University includes program development with respect to the business and human service sector. Presently, she is working in the business field leading human resource projects that benefit the Volunteer Services Department at the Children's Hospital of Philadelphia and developing enrichment programs that bring out the best in children with special needs at Melmark.

Joshua Jackson is a recent graduate of the University of Florida where he double -majored in Political Science and Classical Studies. He is one of the two Americorps National Direct volunteers who manage the NSP office in West Philadelphia. Josh was drawn to National Student Partnerships because of the direct interaction it provides with domestic policy issues and their impact on low-income communities.



Emily Kahoe is the Assistant Director of PolicyMap, a service of The Reinvestment Fund (TRF). PolicyMap is an innovative online data mapping service that gives public policy decision makers access to relevant, up-to-date information. TRF is a national leader in the financing of neighborhood revitalization. PolicyMap grew out of TRF's public policy consultancy, and is a manifestation of our belief that good data leads to smart decisions. PolicyMap launched in May 2008 and currently has 10,000 registered users and subscribers. Ms. Kahoe is a graduate of Bryn Mawr College.

H. Lynda Kugel, J.D., M.H.S.A., is the Self Sufficiency Director of PathWays PA. PathWays PA works in Pennsylvania to achieve economic independence and well-being for low-income women, teens, children and families. The Self-Sufficiency Division of PathWays PA provides education, training, outreach, and advocacy to build paths out of poverty for low-income families toward the goal of realizing self-sufficiency. Ms. Kugel is an attorney, who has represented healthcare providers on a wide range of transactions and corporate issues. She is a former Executive Editor of the *Journal of Law Reform*. Ms. Kugel is currently serving her second term as a School Board Director in Lower Merion Township and is Vice President of the Board. In addition to her legal experience, she has served as a hospital administrator at major academic medical centers. Ms. Kugel has previously run parenting organizations, and has developed and taught family education programs. Ms. Kugel is a graduate of the University of Michigan, where she earned her undergraduate degree in Industrial and Labor Relations, Masters Degree in Hospital Administration, and Law Degree.

Phyllis Mason has over 20 years experience in Program Management including program development and implementation. She is a graduate of Hofstra University with a BA in Social Science and with a certificate in Volunteer Administration from the University of Delaware. Ms. Mason currently serves at the Asset Development Coordinator for Montgomery County Community Action Development Commission (CADCOM). She is responsible to the management of the Family Savings Account and the Volunteer Income Tax Assistance (VITA). CADCOM has been a VITA site for the past seven years and received special recognition from the IRS for its sustained work and successful implementation of the VITA program in 2008. The partnership with Bryn Mawr University and other partnering agencies has been key to the success of our VITA program.

Kamysha Martin has over 17 years experience in the non-profit arena. She holds a Masters degree in Administration of Human Services and a Bachelor's degree in Behavioral Science from Wilmington University. In her current role as Director of Financial Education at Nehemiah Gateway Community Development Corporation (NGCDC), she is responsible for program-



ming centered on financial literacy throughout the state of Delaware. Most notably, Ms. Martin is the creator of The Money Show, an innovative, interactive, skit-based program designed to provide financial "edutainment" to audience members. Ms. Martin has served on various Boards and is currently a Board Member of Delaware Center for the Contemporary Arts and Habitat for Humanity. Kamysa Martin is passionate about fostering empowerment through financial stability.

Sarah Matsui is currently a sophomore at the University of Pennsylvania majoring in Urban Studies. She's passionate about her work with NSP because it gives her the opportunity to work with clients towards achieving self-sufficiency, helps her to gain a deeper understanding of the pressing issues of urban poverty and inequality, and encourages collaboration with fellow students and community partners towards making a positive contribution to both the community as a whole and to the lives of individuals.

Elise Miller is a junior at the University of Pennsylvania where she is pre-law, majoring in Philosophy, Politics and Economics with a concentration in Distributive Justice and minoring in Psychology. Elise volunteered with the Greater Philadelphia Coalition Against Hunger on the Food Stamp Enrollment Campaign, as part of an academically-based community service course. This semester she is continuing her work with GPCAH, conducting research about the enrollment barriers that exist in public benefits programs. She is the current chair of the Jewish community service group at Penn, and through that group established FocusFirst in Philadelphia, a program in which student volunteers provide vision screenings and follow-up eye care to low-income children. She is also currently involved in an international service-learning project, and will be teaching orphaned children in Rwanda this summer, while researching and evaluating psychological resilience measures.

Rachel Moore is the Program Assistant for the Community and Economic Development Department of the Greater Philadelphia Urban Affairs Coalition (GPUAC). Ms. Moore is a recent graduate of Temple University and is co-coordinating the outreach of the Saving Homes, Saving Neighborhoods campaign.

Sandra O'Connor is a senior at Temple University studying Sociology with a Health Track concentration. She started volunteering with NSP's North Philadelphia branch as way to help ameliorate the problems seen throughout this city.

Josh Romalis is the Regional Program Manager for National Student Partnerships and provides support to NSP's Philadelphia and Pittsburgh offices. Prior to his work at NSP, Josh



worked as the Director of Community Outreach for the SHARE Food Program in North Philadelphia, and was also Associate Director for the Peace Corps program in Guinea, West Africa. Josh joined the NSP team in November 2008.

Ruth Strickland is currently the Program Coordinator at Bryn Mawr College's Civic Engagement Office. She graduated from Macalester College (St. Paul, MN) in 2007 with a bachelor's degree in Geography, and originally came to Philadelphia to participate in Pennsylvania Campus Compact's Americorps* VISTA program. As the Program Coordinator at Bryn Mawr College, Ruth works to foster college partnerships with non-profit organizations in Norristown, PA including CADCOM, with whom Bryn Mawr has had a 6-year VITA partnership.

Mary Summers is a Senior Fellow in the Robert A. Fox Leadership Program and a lecturer in Political Science at the University of Pennsylvania. She teaches academically based community service courses on the Politics of Food and Agriculture and Healthy Schools: Community Based Participatory Research, Planning and Action. She directs speakers' programs and service-learning projects in association with these courses. She was the principal investigator for a three-year grant from the USDA to the Greater Philadelphia Coalition Against Hunger that established the Food Stamp Enrollment Campaign. Together with co-authors, Judith Porter at Villa Nova, Suzanne Toton at Villanova, and Hillary Aisenstein at PHENND, she published "Service-Learning with a Food Stamp Enrollment Campaign: Community and Student Benefits" in the *Michigan Journal of Community Service Learning*, Spring, 2008. She has also published articles in *Urban Affairs Quarterly*, *PS: Political Science and Politics*, *Agricultural History*, *The Nation* and several edited volumes.

Sharon Ward is the Director of the Pennsylvania Budget and Policy Center, a research and policy organization which examines state budget and tax policies for their impact on services and on the quality of life for low and middle income Pennsylvanians. Ms. Ward has worked as an advocate on behalf of children, consumers and the environment for more than 20 years. She served as a member of the Albany City Council for eight years, chairing the Council's Finance and Environmental Committees. Ms. Ward received her B.A. from the State University of New York at Albany, and pursued a M.S. in Political Science with a concentration in statistics and methodology at the Rockefeller Institute of Public Policy.

Joann Weeks is an associate director of the University of Pennsylvania's Netter Center for Community Partnerships, focusing on its regional, national and international programs. She directs the national adaptation of the Netter Center's university-assisted community school program, as well as its training and technical assistance activities. She also organizes the



numerous site visits to Penn's work in West Philadelphia. Ms Weeks also serves as the staff director of the International Consortium for Higher Education, Civic Responsibility and Democracy (IC). The IC's organization center is at Penn and it works in affiliation with the Council of Europe. She has organized major national conferences on this work for the Netter Center.

Stephanie Whang is a senior at Swarthmore College. This will be her 3rd year volunteering with the VITA program, and she serves as co-coordinator of the VITA program at Swarthmore College. Stephanie has also had the pleasure of volunteering with the Lions Club at the Center for the Blind and Visually Impaired as well as the Chester Community Improvement Project.

Lea Zacharka is a Tax Consultant with IRS, SPEC, and is responsible for development and management of non-profit and community organization partnerships with IRS. She is responsible for educating taxpayers in Pennsylvania about tax credits, and tax filing and payment methods available to them. She is the IRS SPEC relationship manager for several non-profit community partnerships in the eastern part of Pennsylvania. Ms. Zacharka was formerly the IRS Pennsylvania District Electronic Tax Administration Coordinator responsible for educating tax preparers about the benefits of electronic filing and services and encouraging them to change their tax filing methods to include e-products and services for their clients.



PHENND would like to thank the following individuals and organizations for helping make this conference a success.

- PA/NY Campus Compact Consortium and Learn and Serve America for their financial support of this conference;
- Ryan Murphy, Fran Boshell and the entire Chestnut Hill College community;
- Jean Hunt, Megan Keisel, Ingrid Jauss and Ryan Murphy for serving as a conference planning committee;
- Keynote speaker, President Karen Gross;
- Carol Jean Vale, SSJ, Ph.D., President of Chestnut Hill College;
- All of our many workshop presenters;
- And YOU for attending!



