



STRATEGIC SUSTAINABILITY PLANNING



2012

2015

2015

2030

2035



GREENWORKS

PHILADELPHIA

Energy

PHILADELPHIA REDUCES ITS VULNERABILITY TO RISING ENERGY PRICES



Environment

PHILADELPHIA REDUCES ITS ENVIRONMENTAL FOOTPRINT



Equity

PHILADELPHIA DELIVERS MORE EQUITABLE ACCESS TO HEALTHY NEIGHBORHOODS



Economy

PHILADELPHIA CREATES A COMPETITIVE ADVANTAGE FROM SUSTAINABILITY



Engagement

PHILADELPHIANS UNITE TO BUILD A SUSTAINABLE FUTURE



5 goals, 15 targets, over 150 initiatives



GOAL: PHILADELPHIA DELIVERS MORE EQUITABLE ACCESS TO HEALTHY NEIGHBORHOODS

- **Greenworks Baseline (2008)**

10,300

Acres of Open Space

- **Current (2012)**

10,433

Acres of Open Space

- **2015 Target**

10,800

Acres of Open Space





PHILADELPHIA
PARKS &
RECREATION

PHILADELPHIA
WATER
— EST. 1801 —

THE
TRUST
FOR
PUBLIC
LAND



THE SCHOOL DISTRICT OF
PHILADELPHIA



Green2015
An Action Plan for the First 500 Acres

by PennPraxis

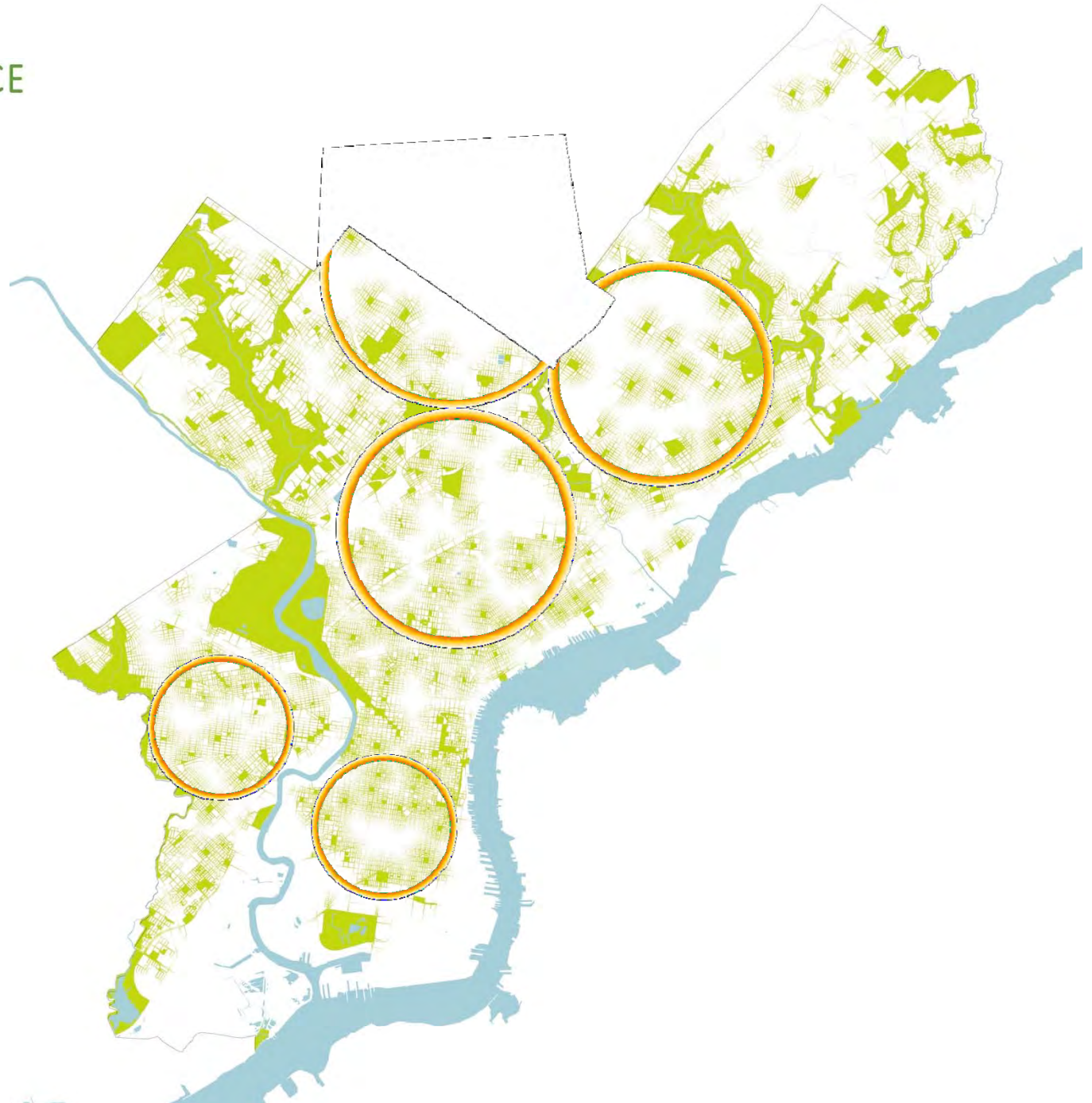
for Philadelphia Parks and Recreation

supported by the William Penn and Lenfest Foundations

GREEN2015

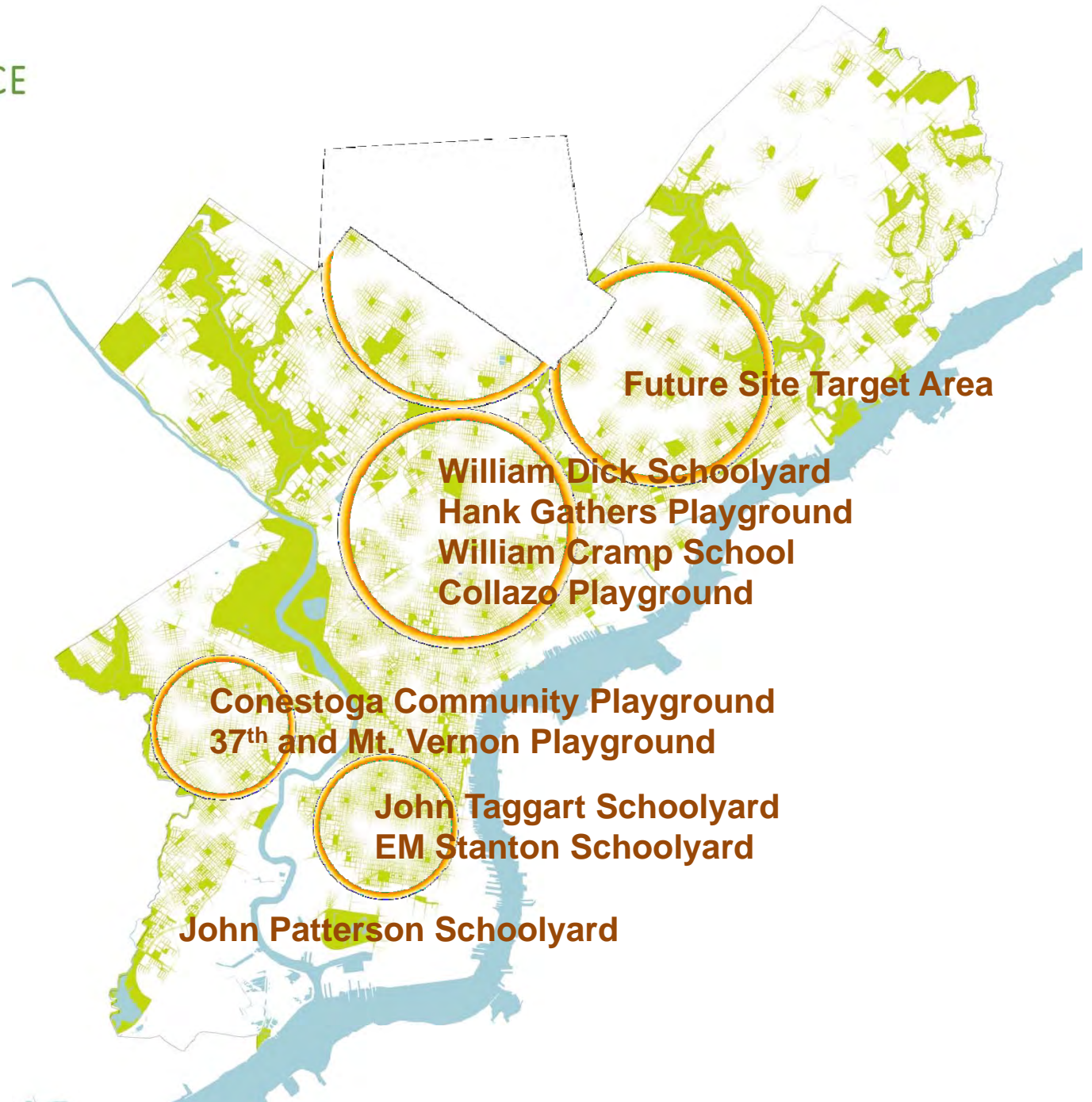
ACCESS TO OPEN SPACE

*More than
200,000
Philadelphians
do not live
within a 10-
minute walk to
a public park
or open space.*



GREEN2015

ACCESS TO OPEN SPACE



Green City, Clean Waters

Partnerships for success



PHILADELPHIA
WATER
EST. 1801

A Strategic investment for the new urban water utility

- PA DEP/PWD Consent Order signed- June 2011
- U.S. EPA/PWD Partnership – September 2012

25 year agreement to spend **\$1.2 billion** with specific targets for:

- 10,000 Total Greened Acres
- 85% Overflow Reduction Volume
- Grey infrastructure to support green infrastructure where necessary



Triple Bottom Line Benefits

Social Benefits

- Increase of up to **10% more** recreational visits to Fairmount Park
- Reduction of up to **140 fatalities** caused by excessive heat over the next 45 years
- Up to **1-2 avoided** premature deaths, up to **20 avoided** asthma attacks, up to **250 fewer** missed days of work or school

Economic Benefits

- Annually, about **250** people are expected to be employed in green jobs Increase of up to **\$390 million** in property value of homes near parks and green areas over the next 45 years

Environmental Benefits

- Up to **1.5 billion lbs.** of carbon dioxide emissions avoided or absorbed. This is equivalent to removing close to **3,400 vehicles** from the roadways each year
- Up to **\$8.5 million** in water quality and habitat improvements over the next 40 years

Public Land

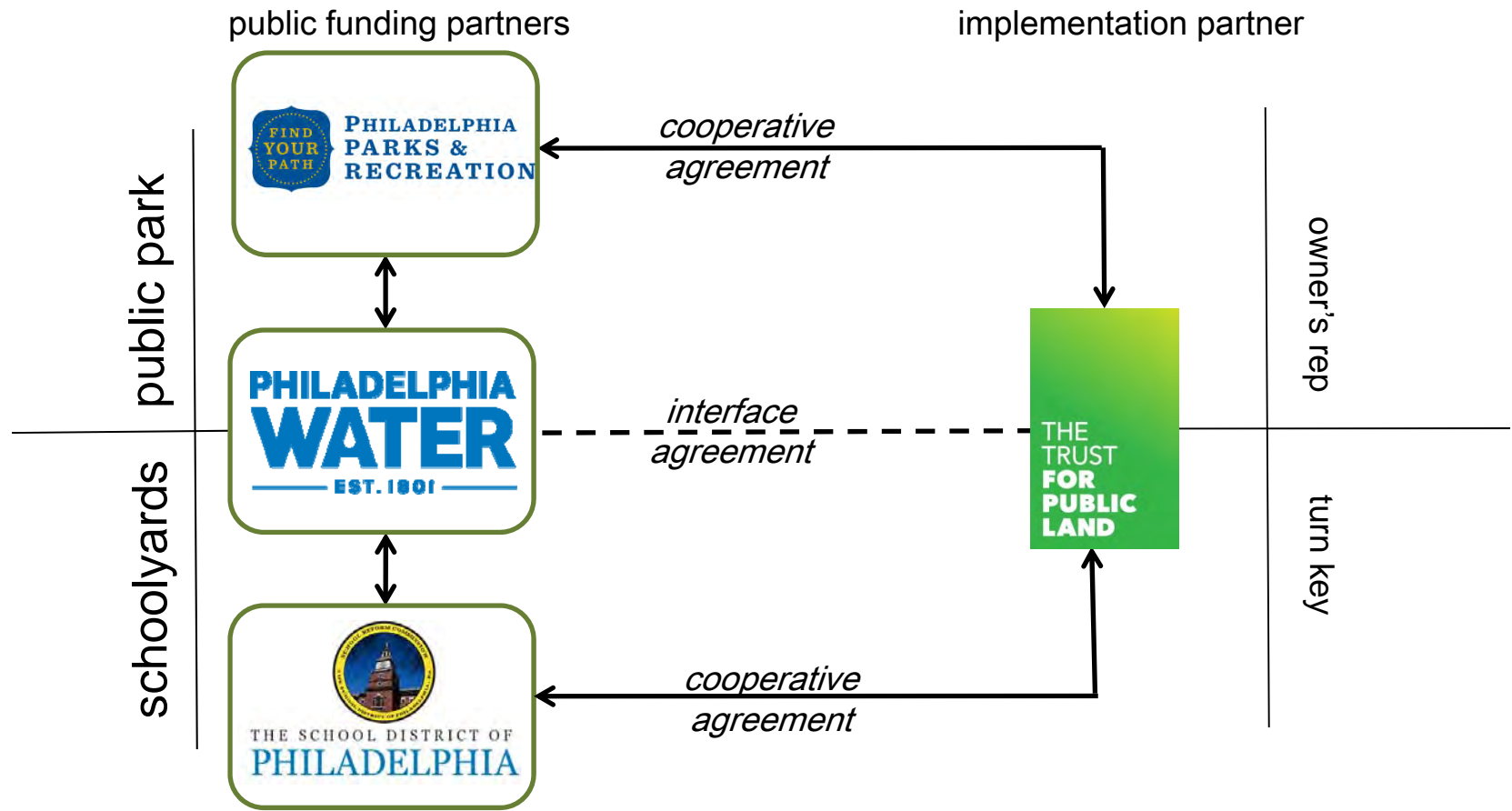




THE
TRUST
FOR
PUBLIC
LAND

The Trust for Public Land **creates parks and protects land for people,** ensuring healthy, livable communities for generations to come.

Photos courtesy of TPL and partners



GREEN2015

OPPORTUNITY SITES

Schoolyards



GREEN2015

OPPORTUNITY SITES

William Dick Elementary School















Leveraging Investments

William Dick School Funding- \$925,630

- PWD- \$207,000
- School District- \$350,000
- Trust for Public Land- \$368,630



William Cramp School



William Cramp School

- The William Cramp Elementary School is a K-5 school.
- 85% percentage of students are Latino with many ESL students.
- The school programs emphasize academic achievement across the curriculum. Special emphasis is focused on reading, math, and science in all the content areas.
- Lead them into a career in architecture, design, drafting, botany, landscape architecture, surveying
- The school has many supportive partners.

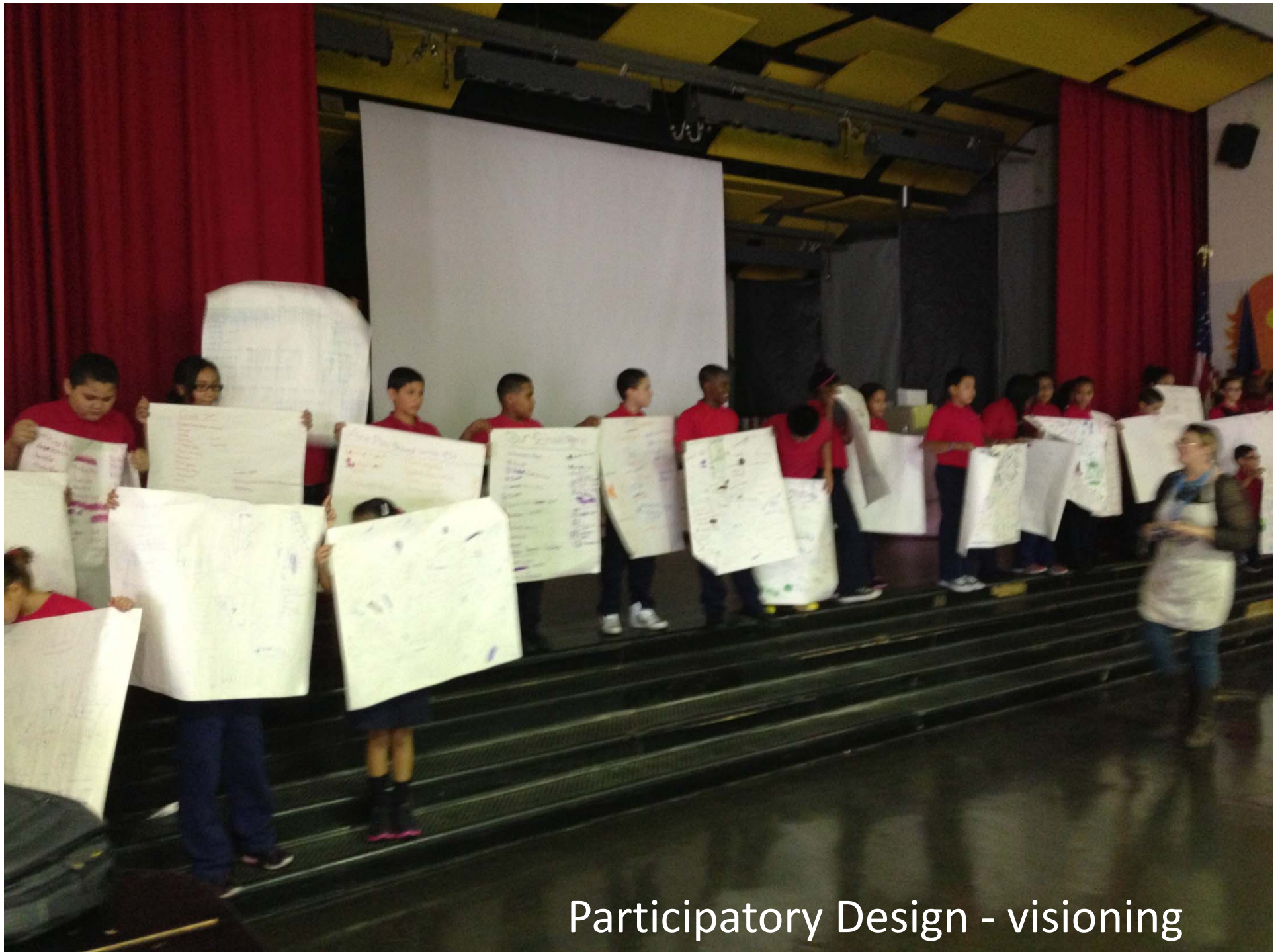


Mascher St

N Howard St

Small groups of 4th and 5th grade students brainstormed ideas for new playground





Participatory Design - visioning



Participatory Design – 40 students



Participatory Design – 14 lessons



Participatory Design – 2 field trips



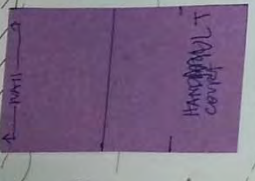
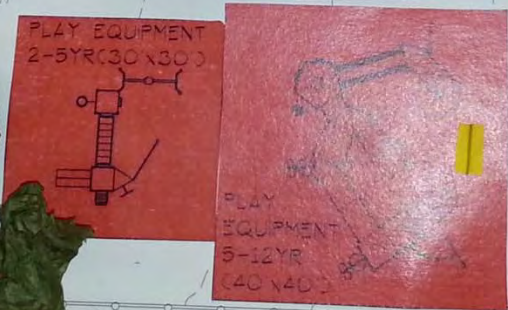




Participatory
Design – 4
design teams



Participatory
Design –
Playdough,
beads and
pipe
cleaners!



Ex. Brick Building





William Cramp Schoolyard













JOHN TAGGART SCHOOL - Participatory Design Syllabus

SCHOOLYARD DESIGN WORKING GROUP

Principal: Principal Reyes
 Building Engineer: TBD
 Core Teacher Leaders: Mrs. Adams – 6th Grade Teacher
 Mrs. Grey – Reading Specialist
 Mrs. Holliday – Teacher Leader

TPL Program Managers: Danielle Denk 267.519.5303
 Gretchen Trefny 215.939.6958

SCHEDULE OF CLASSES

Every Thursday \ 1:15-2:15 PM

LESSONS

1) April 10, 2014 (Multi-purpose Room – Full Student Body, 2 sessions)

INTRODUCTION / WISH LIST

- Introduction to project and to participants. Discuss participatory design, time-line and budget
- Picking a name for your design class
- Show PPT of example TPL projects
- Make a Wish List of what you want to do in the new schoolyard

2) April 17, 2014 (“Design Class” in Mrs. Adams Room)

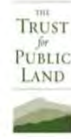
MAPPING PLAY CULTURE

- Map the activities that are currently taking place in the playground
 - What type of activity: Imaginative Play, Sports Play , Learning Play
 - Who: Age, Gender
 - When: Time-specific use, after school use, summer use
- Refine Wish List – What is unrealistic? What activities are popular in schoolyard now?

→ **Classroom Teacher to lead a mapping of the current schoolyard use. Students document the number of students playing various activities in the schoolyard during recess.**

→ **Letter to Parents, Field Trip Permission slips and Model Releases are sent home.**

→ **Homework – Students document various types of activity during the day and after school in specific points in the playground.**



JOHN TAGGART SCHOOL - Participatory Design Syllabus

3) April 24, 2014 (room/schoolyard, weather permitting)

SITE ANALYSIS (SEVEN S's)

- Break into 3 groups to analyze overhead photograph of playground and/or base maps.
 - Group 1 discuss: SOLAR ORIENTATION and SURROUNDINGS
 - Group 2 discuss: SHAPE, SCALE and SITE CONDITIONS
 - Group 3 discuss SLOPE, STORM WATER and DRAINAGE
- Go outside and mark out existing analysis on the site in chalk
 - Group 1 trace shadows on playground, add notes to group base map
 - Group 2 measures existing playground and add dimensions to group base map
 - Group 3 outlines the puddles actual or from memory/traces

→ **Classroom teacher to lead an early morning sun/shade exercise. Students trace shadows from specific points in the playground. (If shady/raining, postpone until the 26th)**

4) May 1, 2013 (Mrs. Adams Room)

THE URBAN WATER CYCLE

Introduce the Urban Water Cycle, the Combined Sewer Issue and stormwater management.

- Natural water cycle vs. The Urban Water Cycle
- Sewer in a Suitcase - Combined Sewer Overflow
- What is a watershed activity
- Looking at our watershed – PWD map

→ **Make sure all field trip permission slips are in. No slip = No trip.**

5) May 8, 2013 (Mrs. Adams Room)

WISH LIST and DIVERSITY

- Refine wish list for the survey, what is realistic, what is really fun, what will be good for kids of all ages, what is within budget
- Multi-culturalism and diversity.

*****DEVELOP PROGRAMMATIC SURVEY MONKEY – SEND OUT TO COMPUTER CLASS*****

6) May 15, 2013 (Field Trip to Herron Playground)

PLAYGROUND ANALYSIS

- Identify different zones, components and play areas
- Identify and analyze green elements and stormwater function
- Use and evaluate play equipment

Field Trip: Students bring their design notebooks. They will be sketching the playground, noting which elements they like, what they don't like, and what they think would work well at their school. Students test out the stormwater infrastructure by pouring water on the various stormwater areas. We will only reschedule if it rains. Buses leave school at 9:30 am and return children to school by 1:00 pm.



JOHN TAGGART SCHOOL - Participatory Design Syllabus



JOHN TAGGART SCHOOL - Participatory Design Syllabus

7) May 22, 2014 (Mrs. Adams Room)

SCHOOLYARD DESIGN -1

- In small groups, students begin to work on baseplan. Recall scale, orientation of baseplan.
- Program element templates representing results of the survey are handed out to each team
- List the different types of Green Infrastructure
- Recall low points and puddles from previous sessions.
- Layout at 1:10 SMP templates on the base plan in the low-points

*****SECOND PARENT AND COMMUNITY MEETING - TBD*****

8) May 29, 2014 (Mrs. Adams Room)

SCHOOLYARD DESIGN - 2

- In small groups, students continue to refine the design.

*****MTG WITH OUT-OF-SCHOOL TIME PROGRAM - TBD*****

***** TBD - MTG WITH PHYSICAL EDUCATION TEACHER - TBD, *****

9) June 5, 2013 (Mrs. Adams Room)

SCHOOLYARD DESIGN-3

TPL will present two design options based on the student's designs.

- The class will compare and contrast the two design options and discuss the differences between the two designs and take a vote on key differences.
- Students will work with TPL to determine how to integrate the most popular elements of each design into a final design.

10) June 12, 2013 (Mrs. Adams Room)

PLAYGROUND EQUIPMENT and DESIGN FOR DIVERSITY

- Students are presented with playground equipment design options and vote on equipment that best match survey results
- Concept plan is refined and students multicultural design ideas are incorporated

11) June 18, 2013 (Multi-purpose Room – Full Student Body, 2 sessions)

FINAL DESIGN PRESENTATION

Students will present final design to the school/parents and partner community.

- Stewardship will be a key message of presentation.
- Parents and community partners encouraged to participate.

PARALLEL ACTIVITIES:

Classroom Teacher Enrichment Parallel / Supporting Activities

- Playground use Mapping
- Shade/shadow Mapping
- Puddle Mapping
- Measuring activity

Student survey

- Computer teacher to be provided with a Survey Monkey for each class to take
- Teachers of Younger students can submit a hand count
- Goal is to reach every student

*****Teachers and parents we welcome your ideas on ways to connect this project to concepts you are already studying in your classes and ways the design can help support the needs of the community *****



Promm 15

IAN SMITH DESIGN GROUP LLC
 ARCHITECTURE | PLANNING | INTERIORS
 2022 E. Washington Street, Philadelphia, PA 19108
 TEL: (215) 525-4522
 www: ian-smith.com

**ALEXANDER ADAIRE
 SCHOOLYARD REVITALIZATION**
 1300 E. PALMER ST
 PHILADELPHIA, PA 19125
 PHILADELPHIA CO.

These design recommendations are intended to assist the property owner in the development of a project. The design recommendations are not intended to be a substitute for the professional services of a licensed architect or engineer. The design recommendations are not intended to be a substitute for the professional services of a licensed architect or engineer. The design recommendations are not intended to be a substitute for the professional services of a licensed architect or engineer. The design recommendations are not intended to be a substitute for the professional services of a licensed architect or engineer.

**DRAWING TITLE
 PERSPECTIVE
 RENDERING**

**PROJECT NUMBER:
 0000-005**
**DATE:
 NOV. 06, 2015**



The student designers at EM Stanton School wanted a place to play, run and be active because the school does not have a gymnasium. The design includes a track, turf field for multi-sport play and play equipment. The students wanted a place to perform and showcase their talents. This design adapts our traditional turf field into a performance space by pairing it with bleachers. The students wanted a place to dig and grow. This design includes formal raised planting beds and a rain garden. The community wanted a place for picnics, festivals and events, so the open space of the turf field will provide a venue for many different activities.



EM Stanton Schoolyard - Current Conditions



EM Stanton Schoolyard - Student Design Concept

GREEN2015

OPPORTUNITY SITES

Recreation centers and
underused PPR sites



GREEN2015

OPPORTUNITY SITES

Hank Gathers Rec Center



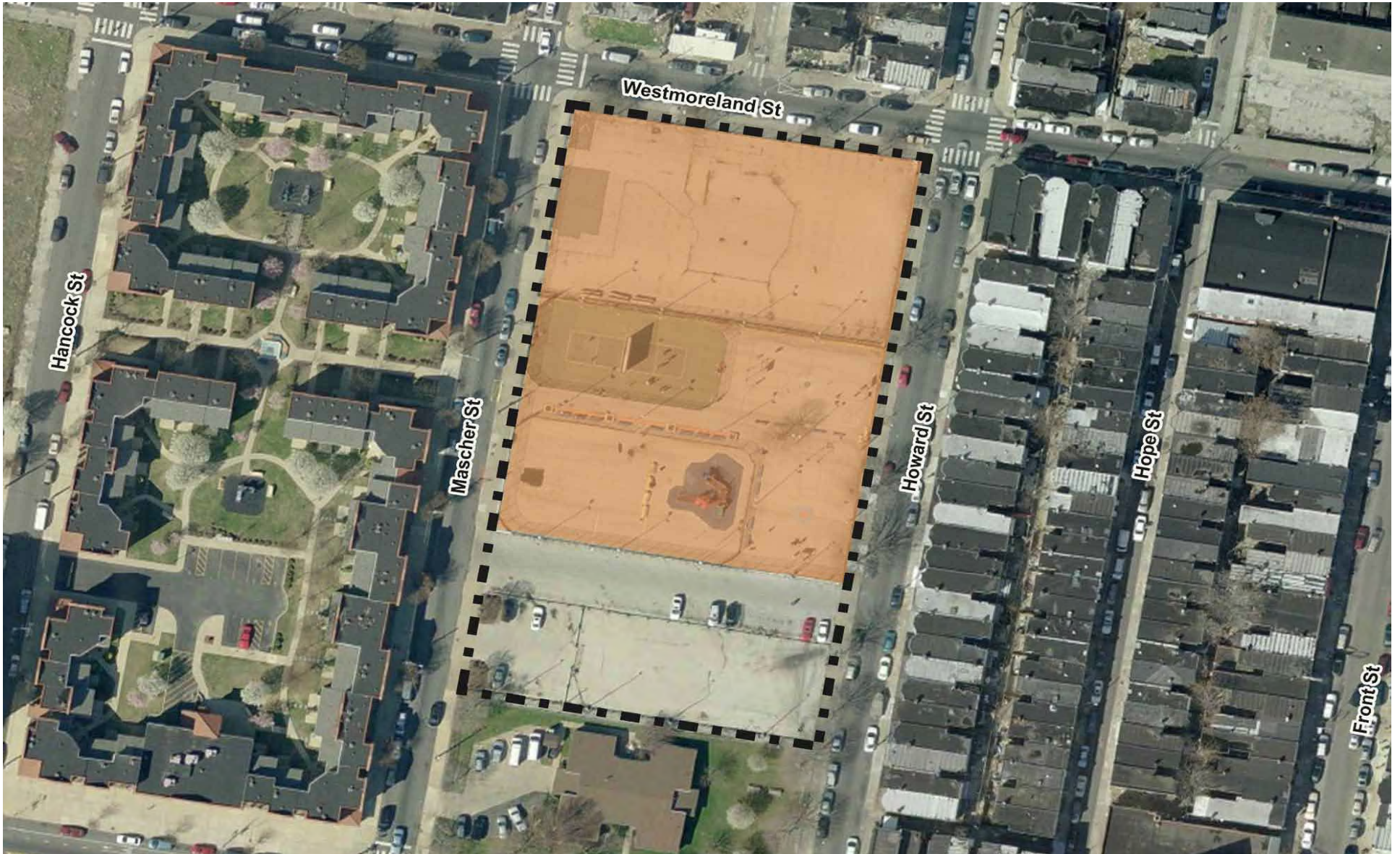






GREEN2015

OPPORTUNITY SITES
Collazo Playground





Community driven design process

- **Site assessment**
- Visioning
- Prioritization
- Concept review
- Concept refinement
- Final concept
- Stewardship

Community driven design process

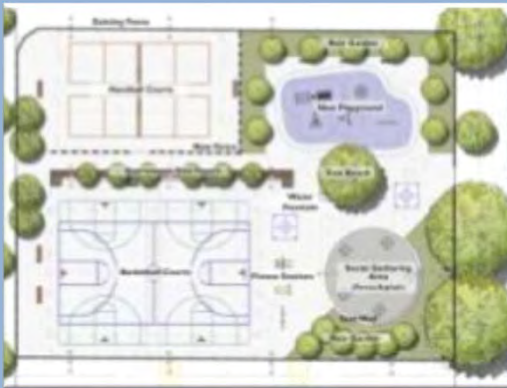
- Site assessment
- **Visioning**
- Prioritization
- Concept review
- Concept refinement
- Final concept
- Stewardship





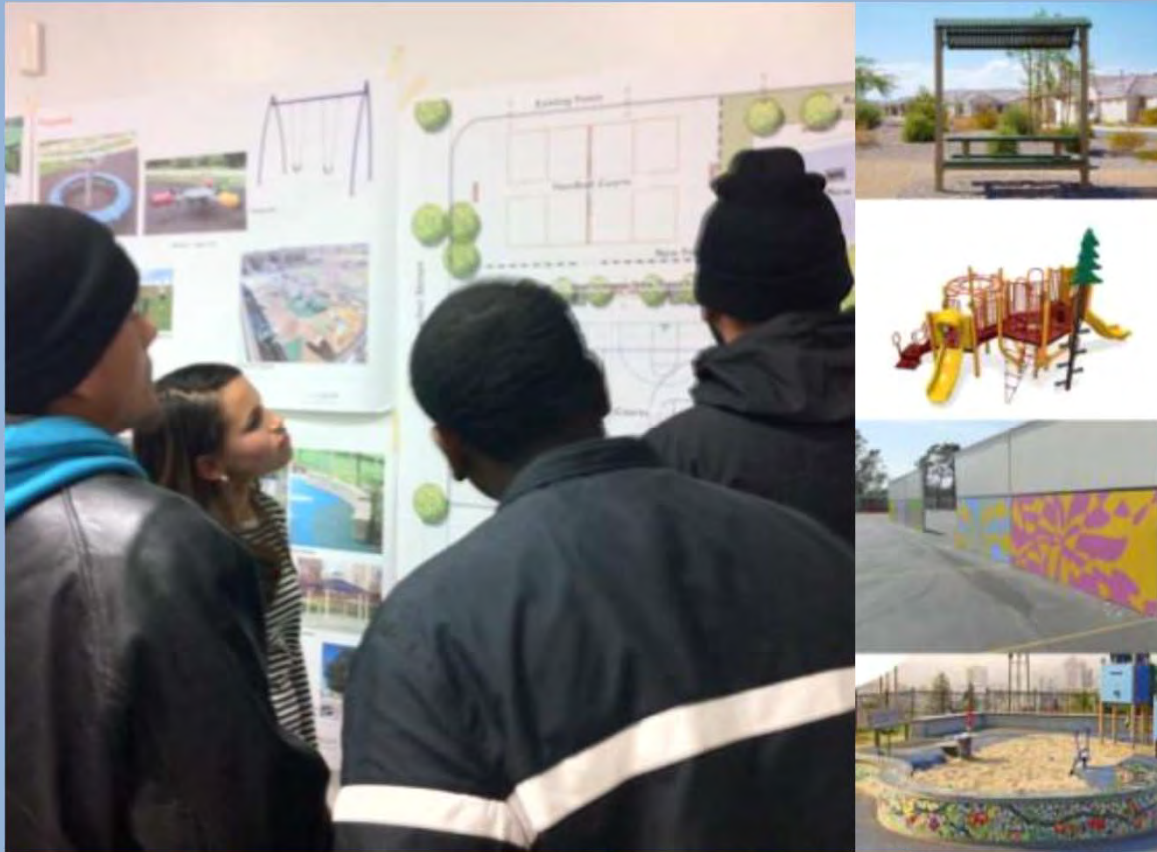
Community driven design process

- Site assessment
- Visioning
- **Prioritization**
- Concept review
- Concept refinement
- Final concept
- Stewardship



Community driven design process

- Site assessment
- Visioning
- Prioritization
- **Concept review**
- Concept refinement
- Final concept
- Stewardship



Community driven design process

- Site assessment
- Visioning
- Prioritization
- Concept review
- **Concept refinement**
- Final concept
- Stewardship



Community driven design process

- Site assessment
- Visioning
- Prioritization
- Concept review
- Concept refinement
- **Final concept**
- Stewardship



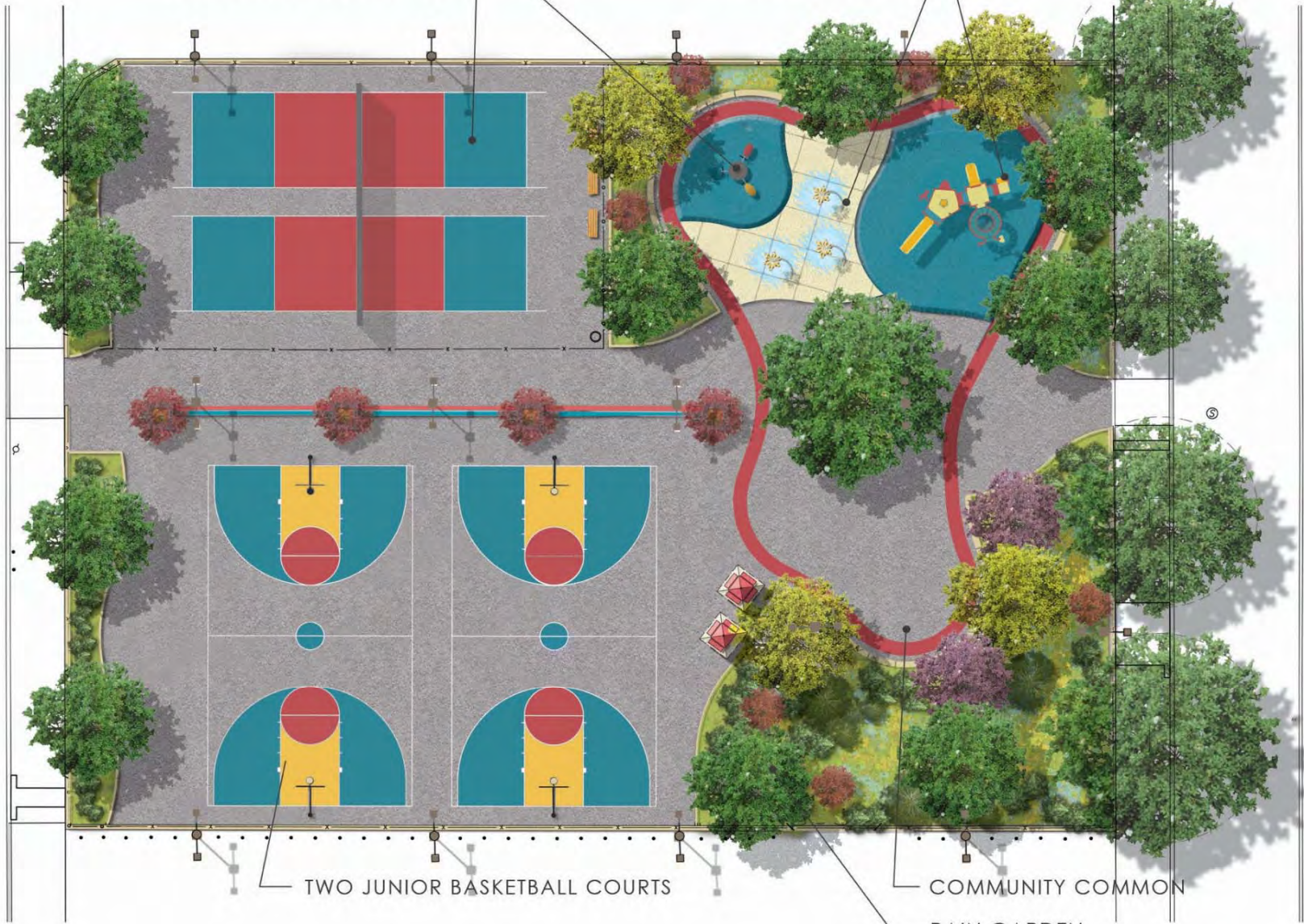
Community driven design process

- Site assessment
- Visioning
- Prioritization
- Concept review
- Concept refinement
- Final concept
- **Stewardship**

GREEN2015
OPPORTUNITY SITES
Collazo Playground

TODDLER PLAYGROUND
FOUR HANDBALL COURTS

5-12 YEAR OLD PLAYGROUND
SPRAYGROUND



TWO JUNIOR BASKETBALL COURTS

COMMUNITY COMMON
RAIN GARDEN

Collazo Playground Construction



OPINION

Working together to 'green' Philadelphia

By Michael DiBerardinis

On June 10, hundreds of people came out for a ribbon-cutting ceremony to celebrate a new "greened" schoolyard at William Dick Elementary School.

The collective excitement around this transformed site was best embodied by the school's sixth, seventh, and eighth graders, who played on the new playground equipment, showed off their gymnastics and tumbling skills on a new turf field, marveled at one of the largest rain gardens in all of Philadelphia, and even got into a pickup football game with Mayor Nutter, School District Superintendent William R. Hite Jr., and other public officials.

Where before there was only concrete, there is now a new greened schoolyard for play and learning.

On Tuesday, we get to celebrate again across the street from the William Dick School at the Hank Gathers Recreation Center, where construction is scheduled to begin to transform and green the play spaces there.

Neighborhood residents participated in a series of design workshops to select the features for an improved recreation center, including an enhanced baseball

diamond, a new spray park, a picnic grove under a canopy of trees, and native grasses. These residents are expected to remain engaged throughout construction and are key partners in the stewardship and viability of such sites.

Both projects are part of Philadelphia's Green2015 initiative, the mayor's comprehensive plan to significantly increase outdoor recreational opportunities and green spaces in underserved neighborhoods throughout the city.

This is important work. Competitive cities are places that care about their recreational and natural resources. Smart cities develop and build high-quality public spaces, promote connection to those spaces by an accessible trail network, encourage energy efficiency, reclaim waterfronts, and plant more trees.

These are the essential components of a competitive city now and into the future. They are places that provide access and opportunities to such resources for all their citizens. They are places where people want to live, work, and play.

Green2015 is a collaboration among the city's Water and Parks and Recreation Departments, the School District, and



Students from the William Dick School play on the school's new artificial turf field. DAVID MIALETTI / STAFF PHOTOGRAPHER

the Trust for Public Land, a national conservation and land-use nonprofit. Support also comes from the William Penn Foundation and other philanthropic organizations.

The Trust for Public Lands has a proven track record of transformative urban greening projects made possible through its highly collaborative approach. By leveraging resources among public agencies and partners, they help create viable green spaces that complement existing quality programming, help manage stormwater, and connect communities to the outdoors.

In Philadelphia, Green2015 is demonstrating that government works best when its

various branches work together and with citizens.

William Dick Elementary School and Hank Gathers Recreation Center are among several targeted sites where the city plans to leverage public and private dollars to create green connections so that children, families, and communities can walk from a green recreation center, along a tree-lined street, to a green schoolyard providing an enhanced outdoor recreation experience.

Working collaboratively, we will kick off a series of greening initiatives at eight additional recreation centers and schoolyards across Philadelphia. We will engage with communities to trans-

form these facilities, remove unused paved surfaces, enhance landscaping, provide public art and amenities, manage flooding and runoff, create community gardens, trim back invasive species, and plant more trees. The goal is to improve sight lines and make our centers safer and more inviting places to play and enjoy.

A similar initiative to leverage investments and connect communities at our neighborhood parks is also being facilitated by the Parks and Recreation Department.

Transforming paved surfaces into parks, gardens, and outdoor classrooms is a smart investment that will have an immediate positive return in the quality of life of our students and our communities. It will move us closer to our critically important goal of ensuring that every child in Philadelphia can walk to a park or green space within 10 minutes of home. Once this goal is achieved, we will have improved the Philadelphia of today and of tomorrow.

Michael DiBerardinis is the deputy mayor for environmental and community resources for the city of Philadelphia and commissioner of the Department of Parks and Recreation. michael.diberardinis@philly.gov



www.metro.us
Wednesday, July 9, 2014

'Positive environments' are growing at recreation center

Greening up. A Strawberry Mansion rec center is getting some love, city officials announced.

One hundred youngsters at the Hank Gathers Recreation Center on Tuesday were urged to appreciate coming renovations by a familiar face — Shirley Hardy, a longtime rec center employee affectionately known as "Aunt ShirL."

"I ask you to come out and help us so we can keep what we get," Hardy said. "All you up-and-coming NBA stars were all reaching for the stars, so keep reaching."

Bernadette Watson, the rec center's after-school coordinator who served on the planning



Zalyanna Taylor, 7, plays during a groundbreaking ceremony for a renovation of the Hank Gathers Recreation Center in Strawberry Mansion on Tuesday. / PHOTOS BY CHARLES MOSTELLER, METRO



Quoted

"It's gonna give our kids a sense of belonging, a sense of pride and respect." Watson

Coming improvements

The rec center will get a new water spray park, new picnic tables, and redesigned greenery. The existing basketball courts and junior baseball diamond will be enhanced.

- The project, part of Green2015 Philadelphia, follows similar renovations at William Dick Elementary across the street.

committee for this project, said she was pleased with the changes.

"We want the best for our community. People think 25th and Diamond — it's below the ghetto," Watson said. "This shows us that we're not forgotten. We're on the move."

Nakeisha Scott, 39, whose 9-year-old daughter Heavenly sang Whitney Houston's "Greatest Love of All" at the groundbreaking, said the renovations will help the neighborhood. "It's hard out here. Some of us don't know

nothing but getting in trouble. We're all trying to be better, but we need positive environments," Scott said. "Everything [the rec center] do is for the kids, and they need things to do so they're not getting in trouble."

The project, organized by Parks and Recreation and the Trust for Public Land, is expected to be completed by fall.

SAM NEWHOUSE
@snewhouse
sam.newhouse@metro.us

PHILADELPHIA

DAILY NEWS

MONDAY
JUNE 9, 2014

NEWS

THE PEOPLE PAPER

\$1

NEWS | NEIGHBORHOODS: NORTH PHILADELPHIA

Once a barren lot, now an oasis

Schoolyard's broken hard surface replaced with trees, rain garden

BY VALERIE RUSS
Daily News Staff Writer
russ@phillynews.com, 215-854-8887

STARTING tomorrow, children who attend or live near William Dick Elementary School, in North Philadelphia, will have a new playground, with more green space added to what used to be mostly asphalt.

The massive, 2-acre schoolyard, on Diamond Street near 24th, "has evolved from a totally empty, broken concrete slab" into an oasis, with new trees, new asphalt and a lush rain garden, said principal Amy J. Williams.

Two years ago, a group of sixth-, seventh- and eighth-graders

at the school teamed up with designers and engineers, in a project organized by the Trust for Public Land, to plan the improvements.

The students helped to decide where a new playground structure would go, where maple trees should be planted and which plants would attract birds and butterflies to the new rain garden, installed against a back fence.

The rain garden eliminated 10,000 square feet of asphalt. "I suggested we needed places to just sit and rest," said Aziza Pressley, 14, now an eighth-grader, who talked about his ideas for benches near the new trees.

"I thought of the spinning cups," said Keira Richards, 11,



Danielle Denk, program manager for the Trust for Public Land, speaks with William Dick School students who helped design the new playground, depicted on board at right. PHOTOS: DAVID MIALETTI / STAFF PHOTOGRAPHER

pointing to red buckets in the new play area.

There are spaces for kickball and basketball, and a new turf field area that now has proper drainage after puddles had collected on the old one.

During the school year, the playground will provide outdoor classrooms where pupils can learn how the rain garden benefits the community by improving water quality. A map of the United States will be painted outside, Williams said.

The first playground improvements at William Dick came in 2007, when the Philadelphia Eagles added a playground structure and the Mural Arts Program painted murals on a back fence and around the school.

But the rest of the school was still barren, without trees or natural greenery. The broken asphalt was unpleasant to look at and posed a hazard.

"You could pick pieces up and throw it, so it was dangerous," said Danielle Denk, program manager for the Trust for Public

Land, a national group that works to conserve land for parks, gardens and other natural places.

William Dick is the first of 10 playground or rec-center renovations planned to meet Mayor Nut-

ter's goal of creating 500 new acres of public green space by 2015, said Deputy Mayor Michael DiBerardinis, head of the city's Parks and Recreation Department.

See PLAYGROUND Page 10

The next slated to go green

THE TRUST for Public Land managed the renovation of the William Dick schoolyard and helped the city raise \$10 million to "green" it and others.

The next two sites ready for makeovers are:

► Hank Gathers Recreation Center, 25th and Diamond streets, across from the William Dick School

► William Cramp School, Mascher Street near Ontario, Fairhill

Five other playgrounds on the greening list are:

► Conestoga Community Playground, 53rd and Media streets, West Philadelphia

► Laner Playground, 29th and Tasker streets, Grays Ferry

► 37th and Mount Vernon Playground, Mantua

► Taggart School, Porter Street near 4th, South Philadelphia

► Collazo Playground, Mascher and Westmorland streets, Fairhill

The last two sites have not yet been selected.

— Valerie Russ

Monday, June 9, 2014

PHILADELPHIA DAILY NEWS — PhillyDailyNews.com

Page 1

PLAYGROUND
Continued from Page 5

Nutter's goal, announced in his 2008 inaugural address, is to provide green space within a 10-minute walk of about 75 percent of the city's residents.

"The priority was to bring green space and high-quality recreation space to neighborhoods that didn't have access to it," DiBerardinis said.

The Trust for Public Land teamed with the city to help achieve that goal.

"The Trust for Public Land believes that parks help improve the environmental health of communities and the physical health of their citizens," said Jeff Dinter, a vice president of the trust.

"People who live near a well-developed park are more likely to be healthy."

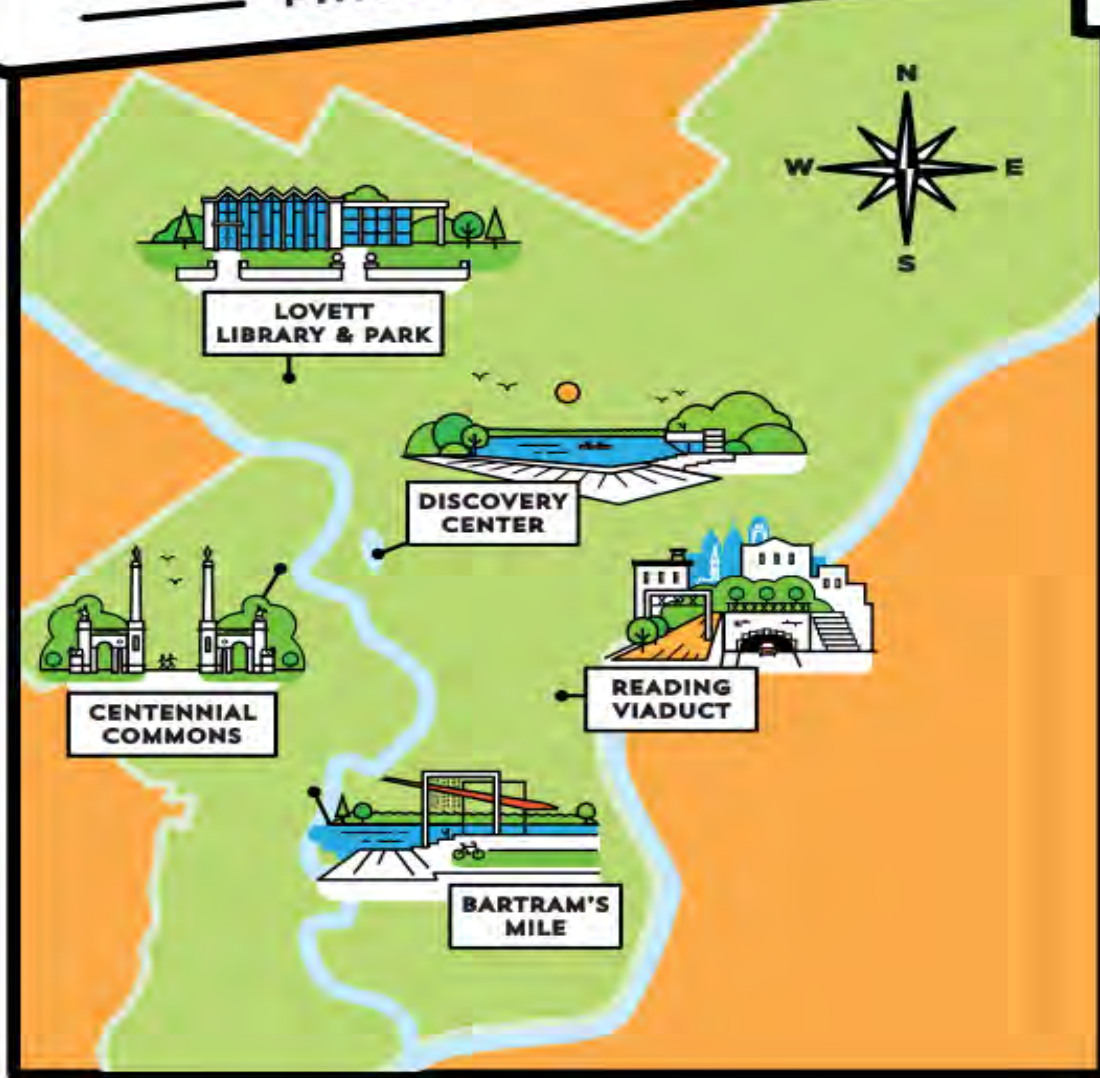
The changes also will help to keep storm water from flooding the city's drainage pipes, which can lead to sewer backups, polluted drinking water and flooded basements.

The William Dick playground will be open to the public in the evenings, on weekends and over the summer, and will function as a community park.

"It was a barren area that has really come to life with greenery that is not common in an inner-city playground," said Williams, the principal. "It's something for our entire community."

© ValerieRussDN

Reimagining the
CIVIC COMMONS
PHILADELPHIA, PA.



**LOVETT
LIBRARY & PARK**

**DISCOVERY
CENTER**

**CENTENNIAL
COMMONS**

**READING
VIADUCT**

**BARTRAM'S
MILE**



Arts



Journalism

Knight Foundation

We fund ideas from people with the vision, tenacity, courage, know-how, and commitment to discovery to see them through.

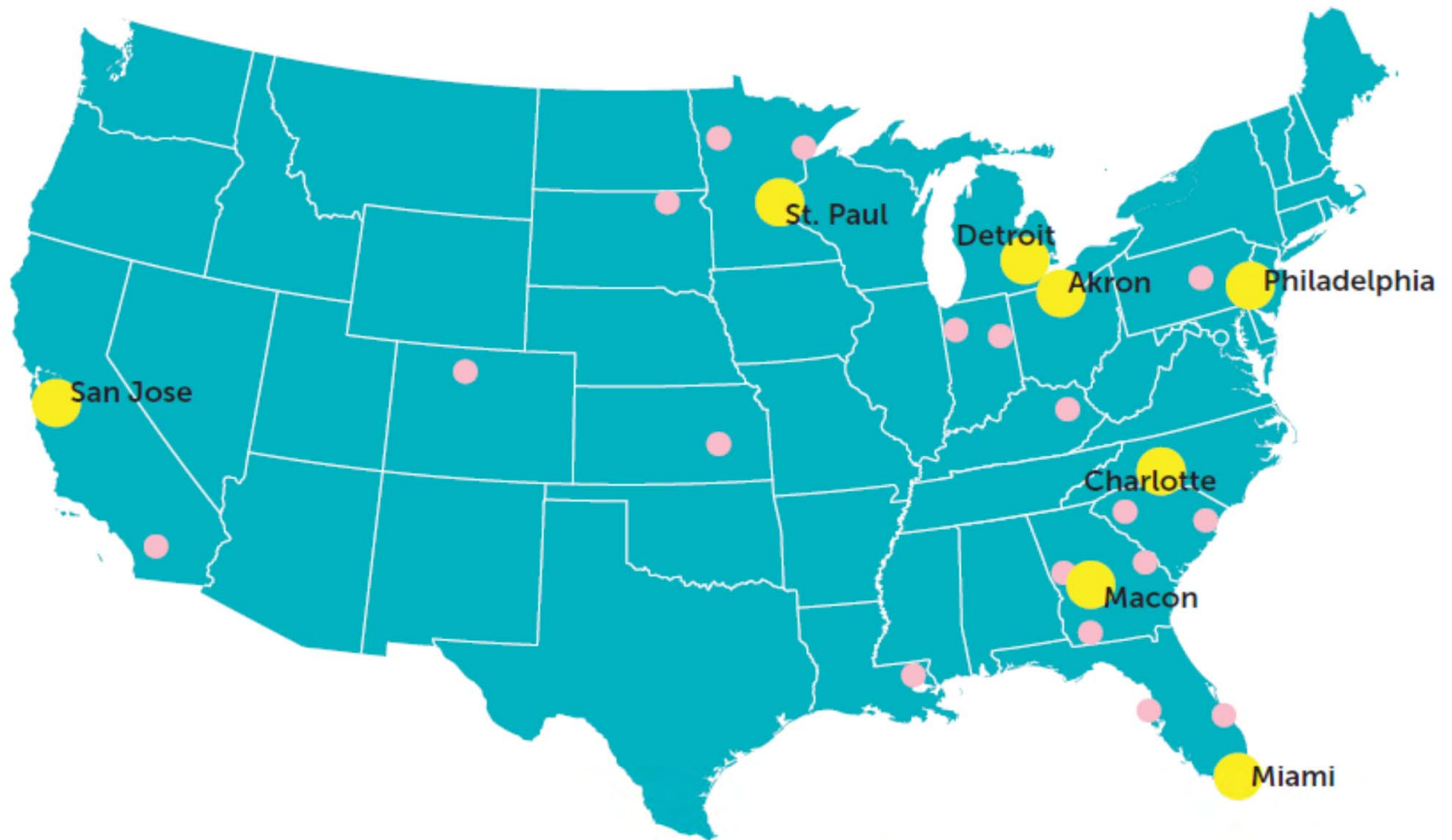


Communities



Media Innovation

There are 26 Knight Communities



- Resident Communities
- Non-Resident Communities

Aberdeen, S.D.	Fort Wayne, Ind.	Palm Beach Co., Fla.
Biloxi, Miss.	Gary, Ind.	State College, Pa.
Boulder, Colo.	Grand Forks, N.D.	Tallahassee, Fla.
Bradenton, Fla.	Lexington, Ky.	Wichita, Kan.
Columbia, S.C.	Long Beach, Calif.	
Columbus, Ga.	Milledgeville, Ga.	
Duluth, Minn.	Myrtle Beach, S.C.	

Reimagining the Civic Commons



FAIRMOUNT PARK

CONSERVANCY

Pilot initiative in Philadelphia

\$11 million investment includes:

- **direct project support**
- **capacity support to convene project partners**
- **collaborate on programming**
- **share knowledge and resources**
- **measure and document project impacts on the community**

Reimagining the Civic Commons

WHAT IF??

Civic assets could be “re-imagined” to catalyze positive engagement and “community-making” in rapidly changing neighborhoods

Formerly insular public space operators found new ways to collaborate and share resources/knowledge

Could advance the public space policy agenda for our city



Reimagining the Civic Commons: Local and National Strategy Alignment



“Great Public Spaces” Goals

Promoting Connectivity =

Equity of Access =

Shared Civic Space =

Conserving Community Identity =

Enhancing Performance
Repurpose Assets =

“Civic Commons” Goals

Diminishing Social Isolation

Social/Economic Integration

The “Civic Commons”

Engendering Pride of Place

Next Generation Synergies

Reimagining the Civic Commons

CIVIC COMMONS COLLECTIVE WHO ARE WE?

Fairmount Park Conservancy Centennial Commons Project

Free Library of Philadelphia and Mt. Airy USA Lovett Library and Park

Outward Bound and Audubon PA Discovery Center

Schuylkill River Development Corp. and Bartram's Garden Bartram's Mile

Center City District Reading Viaduct/Rail Park

Reading Terminal Market





Lovett Park
and Library

1 inch = 5,208 feet

East Fairmount
Park Discovery
Center

Centennial
Commons

Reading
Viaduct
Park

Bartram's
Mile

Reimagining the Civic Commons

STRUCTURE FOR CIVIC COMMONS COLLECTIVE CONVENINGS

- Meetings every other month
- Learning labs- presentations and discussions with national and local thought-leaders/practitioners
- Learning journeys- trips to regional projects
- Collaborate around “real world” issues
 - Programming
 - Policy/Governance
 - Technology
 - Funding



The Civic Commons Projects

Centennial Commons Neighborhood: East Parkside



Centennial Commons



Centennial Commons



Centennial Commons



Centennial Commons



Centennial Commons



Discovery Center Neighborhood: Strawberry Mansion



Discovery Center



Discovery Center



Discovery Center



The Viaduct Neighborhood: Chinatown / Loft District



The Viaduct



The Viaduct



The Viaduct



Bartram's Mile Neighborhood: Southwest Philadelphia



Bartram's Mile



Bartram's Mile



Bartram's Mile



Lovett Library and Park Neighborhood: Mount Airy



Lovett Library and Park



Lovett Library and Park



Lovett Library and Park



Lovett Library and Park



Reimagining the Civic Commons/Green2015

Investments in public spaces/civic assets

- spaces where people can connect with nature and each other
- provide access to high-quality public amenities

Many partners aligning interest for common vision

- national and local funding priorities
- what can we do together that we can't do alone that adds value to neighborhoods
- deep community engagement (design, build, and beyond)

Investing in momentum not a moment

- ambitious and sound planning “think big”
- projects in “seam” neighborhoods
- leveraged investments/repurposing public assets

Connectivity

- physical
- people and neighborhoods
- project partners “Civic Commons network”

Learn from and replicate models

- Green2015 20 more school
- Civic Commons national expansion

Patrick Morgan
Program Director Philadelphia
Knight Foundation
Office: (267) 419 - 7640
Email: morgan@knightfoundation.org
@PMorganPHL



Knight Foundation supports innovative ideas in arts, journalism
and technology that help communities shape their futures.

knightfoundation.org